



Shininess the Future



上海善宇实业有限公司  
Shanghai shininess Industrial Co., Ltd

Tel: +86-21-58545653

Fax: +86-21-58545652

E-mail: info@shininess.com

Website: www.shininess.com

www.shininess-home.com



LED BULBS

G4 / GY6.35 / G8 / G9 / G12 / E11 / E12 / E14 / E17 / R7S / BA15D



# Company Profile

Established in 2004, Shanghai Shininess Industrial Co., Ltd. is a professional manufacturer of LED lighting. We have been dedicated to develop more well-design LED lighting products, and devoted to provide professional services to global clients.

The company has advanced machines and well-equipped lab which can do all the safety testing. Such as Photometric testing, EMI testing, EMF testing, Surge testing, ESD testing, IES testing, etc. With TUV, CE, UL, DLC, ETL, Energy Star, FCC, SAA, RoHS, etc.

The vision of SNS is to Shininess the Future by offering excellent LED lighting products at affordable prices.



# Contents

G9 LED Light	01 - 06
G4 LED Light	07 - 14
GY6.35 LED Light	15 - 16
E12 LED Light	17 - 18
E14 LED Light	19 - 20
B15 LED Light	21 - 22
R7S LED Light	23 - 24
E11 / E17 LED Light	24 - 24
G8 / G8.5 / G12 LED Light	25 - 25
G24 PL LED Light	26 - 26
MR11 LED Light	27 - 28
MR16 LED Light	29 - 30
GU10 LED Light	31 - 34



# G9 LED Bulb Series



Model: SNS-G9-4014-84LED  
 Dimension: Ø16.3X54mm  
 LED type: 84pcs SMD4014  
 Power: 3.3W±0.3W  
 Lumens: 370lm±10%  
 Beam angle: 360°  
 Color: WW, NW, CW  
 CRI: Ra>80  
 Voltage: 110-130VAC  
 Material: Ceramic + PC  
 Base: G9  
 Remark: **Non-dimmable, No Flicker, ETL**



Model: SNS-G9-4014-54LED  
 Dimension: Ø16.3X54mm  
 LED type: 54pcs SMD4014  
 Power: 3.3W±0.3W  
 Lumens: 450lm±10%  
 Beam angle: 360°  
 Color: WW, NW, CW  
 CRI: Ra>80  
 Voltage: 100-240VAC  
 Material: Ceramic + PC  
 Base: G9  
 Remark: **Non-dimmable, No Flicker**



Model: SNS-G9-4014W-54LED  
 Dimension: Ø16.3X54mm  
 LED type: 54pcs SMD4014  
 Power: 3.3W±0.3W  
 Lumens: 450lm±10%  
 Beam angle: 360°  
 Color: WW, NW, CW  
 CRI: Ra>80  
 Voltage: 110-130VAC  
 Material: Ceramic + PC  
 Base: G9  
 Remark: **Non-dimmable, No Flicker, ETL**



Model: SNS-G9-4014D-54LED  
 Dimension: Ø16.3X54mm  
 LED type: 54pcs SMD4014  
 Power: 2.1W±0.3W  
 Lumens: 260lm±10%  
 Beam angle: 360°  
 Color: WW, NW, CW  
 CRI: Ra>80  
 Voltage: 110-130VAC  
 Material: Ceramic + PC  
 Base: G9  
 Remark: **Dimmable, No Flicker, ETL**



Model: SNS-G9-4014T-46LED  
 Dimension: Ø16.5X54mm  
 LED type: 46pcs SMD4014  
 Power: 3.0W±0.3W  
 Lumens: 330lm±10%  
 Beam angle: 360°  
 Color: WW, NW, CW  
 CRI: Ra>80  
 Voltage: 220-240VAC  
 Material: Ceramic + PC  
 Base: G9  
 Remark: **0-100% Dimmable, No Flicker**



Model: SNS-G9-4014-33LED  
 Dimension: Ø16.5X47.5mm  
 LED type: 33pcs SMD4014  
 Power: 2.7W±0.3W  
 Lumens: 350lm±10%  
 Beam angle: 360°  
 Color: WW, NW, CW  
 CRI: Ra>80  
 Voltage: 220-240VAC  
 Material: Ceramic + PC  
 Base: G9  
 Remark: **Non-dimmable, No Flicker**



Model: SNS-G9-5630-26LED  
 Dimension: Ø16.5X54mm  
 LED type: 26pcs SMD5630  
 Power: 3.3W±0.3W  
 Lumens: 370lm±10%  
 Beam angle: 360°  
 Color: WW, NW, CW  
 CRI: Ra>80  
 Voltage: 100-240VAC  
 Material: Ceramic + PC  
 Base: G9  
 Remark: **Non-dimmable, No Flicker**



Model: SNS-G9-5630-52LED  
 Dimension: Ø22X54mm  
 LED type: 52pcs SMD5630  
 Power: 4.6W±0.3W  
 Lumens: 530lm±10%  
 Beam angle: 360°  
 Color: WW, NW, CW  
 CRI: Ra>80  
 Voltage: 100-240VAC  
 Material: Ceramic + PC  
 Base: G9  
 Remark: **Non-dimmable, No Flicker**



Model: SNS-G9-5730-75LED  
 Dimension: Ø18.6X68.5mm  
 LED type: 75pcs SMD5730  
 Power: 5.8W±0.3W  
 Lumens: 800lm±10%  
 Beam angle: 360°  
 Color: WW, NW, CW  
 CRI: Ra>80  
 Voltage: 100-240VAC  
 Material: Ceramic + PC  
 Base: G9  
 Remark: **Non-dimmable, No Flicker**



Model: SNS-G9-2835-100LED  
 Dimension: Ø18.6X68.3mm  
 LED type: 100pcs SMD2835  
 Power: 5.8W±0.3W  
 Lumens: 800lm±10%  
 Beam angle: 360°  
 Color: WW, NW, CW  
 CRI: Ra>80  
 Voltage: 100-240VAC  
 Material: Ceramic + PC  
 Base: G9  
 Remark: **Non-dimmable, No Flicker**





## G9 LED Bulb Series



Model: SNS-G9-2609-3WA  
 Dimension: Ø17.6X62mm  
 LED type: 1pc 2609COB  
 Power: 3.3W±0.3W  
 Lumens: 420lm±10%  
 Beam angle: 360°  
 Color: WW, NW, CW  
 CRI: Ra>80  
 Voltage: 110-130VAC / 220-240VAC  
 Material: Ceramic + Silicone Glue + PC  
 Base: G9  
 Remark: **Non-dimmable, No Flicker**



Model: SNS-G9-2609T-3WA  
 Dimension: Ø17.6X62mm  
 LED type: 1pc 2609COB  
 Power: 3.3W±0.3W  
 Lumens: 330lm±10%  
 Beam angle: 360°  
 Color: WW, NW, CW  
 CRI: Ra>80  
 Voltage: 110-130VAC / 220-240VAC  
 Material: Ceramic + Silicone Glue + PC  
 Base: G9  
 Remark: **0-100% Dimmable, No Flicker**



Model: SNS-G9-2508-3WC  
 Dimension: Ø16X57mm  
 LED type: 1pc 2508COB  
 Power: 2.9W±0.3W  
 Lumens: 300lm±10%  
 Beam angle: 360°  
 Color: WW, NW, CW  
 CRI: Ra>80  
 Voltage: 110-130VAC / 220-240VAC  
 Material: Ceramic + Silicone Glue + PC  
 Base: G9  
 Remark: **Dimmable**



Model: SNS-G9-2609-4WC  
 Dimension: Ø16X58mm  
 LED type: 1pc 2609COB  
 Power: 3.5W±0.3W  
 Lumens: 500lm±10%  
 Beam angle: 360°  
 Color: WW, NW, CW  
 CRI: Ra>80  
 Voltage: 110-130VAC / 220-240VAC  
 Material: Ceramic + Silicone Glue + PC  
 Base: G9  
 Remark: **Dimmable, ETL**



Model: SNS-G9-1508-2WC  
 Dimension: Ø16.5X46.5mm  
 LED type: 1pc 1508COB  
 Power: 2.3W±0.3W  
 Lumens: 260lm±10%  
 Beam angle: 360°  
 Color: WW, NW, CW  
 CRI: Ra>80  
 Voltage: 110-130VAC / 220-240VAC  
 Material: Ceramic + Silicone Glue + PC  
 Base: G9  
 Remark: **Dimmable, ETL**



Model: SNS-G9-2609-2.5WA  
 Dimension: Ø16X60mm  
 LED type: 1pc 2609COB  
 Power: 2.3W±0.3W  
 Lumens: 270lm±10%  
 Beam angle: 360°  
 Color: WW, NW, CW  
 CRI: Ra>80  
 Voltage: 110-130VAC / 220-240VAC  
 Material: Ceramic + Silicone Glue + PC  
 Base: G9  
 Remark: **Dimmable**



Model: SNS-G9-4LED-2W  
 Dimension: Ø16X46.5mm  
 LED type: 4pcs COB  
 Power: 2.0W±0.3W  
 Lumens: 200lm±10%  
 Beam angle: 360°  
 Color: WW, NW, CW  
 CRI: Ra>80  
 Voltage: 110-130VAC / 220-240VAC  
 Material: Ceramic + PC  
 Base: G9  
 Remark: **Dimmable**



Model: SNS-G9-4LED-3W  
 Dimension: Ø16X61mm  
 LED type: 4pcs COB  
 Power: 3.3W±0.3W  
 Lumens: 380lm±10%  
 Beam angle: 360°  
 Color: WW, NW, CW  
 CRI: Ra>80  
 Voltage: 110-130VAC / 220-240VAC  
 Material: Ceramic + PC  
 Base: G9  
 Remark: **Dimmable**

## G9 LED Bulb Series



Model: SNS-G9-2835-88LED  
 Dimension: Ø18.6X68.3mm  
 LED type: 88pcs SMD2835  
 Power: 5.0W±0.3W  
 Lumens: 600lm±10%  
 Beam angle: 360°  
 Color: WW, NW, CW  
 CRI: Ra>80  
 Voltage: 110-130VAC / 220-240VAC  
 Material: Ceramic + PC  
 Base: G9  
 Remark: **Non-dimmable, No Flicker, ETL**



Model: SNS-G9-2835D-88LED  
 Dimension: Ø18.6X68.3mm  
 LED type: 88pcs SMD2835  
 Power: 5.0W±0.3W  
 Lumens: 600lm±10%  
 Beam angle: 360°  
 Color: WW, NW, CW  
 CRI: Ra>80  
 Voltage: 110-130VAC / 220-240VAC  
 Material: Ceramic + PC  
 Base: G9  
 Remark: **Dimmable, No Flicker, ETL**



Model: SNS-G9-2835T-88LED  
 Dimension: Ø18.6X68.3mm  
 LED type: 88pcs SMD2835  
 Power: 4.1W±0.3W  
 Lumens: 410lm±10%  
 Beam angle: 360°  
 Color: WW, NW, CW  
 CRI: Ra>80  
 Voltage: 110-130VAC / 220-240VAC  
 Material: Ceramic + PC  
 Base: G9  
 Remark: **0-100% Dimmable, No Flicker**



Model: SNS-G9-2835T-58LED  
 Dimension: Ø16.5X54mm  
 LED type: 58pcs SMD2835  
 Power: 3.2W±0.3W  
 Lumens: 320lm±10%  
 Beam angle: 360°  
 Color: WW, NW, CW  
 CRI: Ra>80  
 Voltage: 220-240VAC  
 Material: Ceramic + PC  
 Base: G9  
 Remark: **0-100% Dimmable, No Flicker**



Model: SNS-G9-2835T-46LED  
 Dimension: Ø18.5X54mm  
 LED type: 46pcs SMD2835  
 Power: 3.3W±0.3W  
 Lumens: 330lm±10%  
 Beam angle: 360°  
 Color: WW, NW, CW  
 CRI: Ra>80  
 Voltage: 220-240VAC  
 Material: Ceramic + PC  
 Base: G9  
 Remark: **0-100% Dimmable, No Flicker**



Model: SNS-G9-2835T-32LED  
 Dimension: Ø15.5X51mm  
 LED type: 32pcs SMD2835  
 Power: 2.6W±0.3W  
 Lumens: 260lm±10%  
 Beam angle: 360°  
 Color: WW, NW, CW  
 CRI: Ra>80  
 Voltage: 220-240VAC  
 Material: Ceramic + PC  
 Base: G9  
 Remark: **0-100% Dimmable, No Flicker**



Model: SNS-G9-2835W-32LED  
 Dimension: Ø15.5X51mm  
 LED type: 32pcs SMD2835  
 Power: 3.0W±0.3W  
 Lumens: 360lm±10%  
 Beam angle: 360°  
 Color: WW, NW, CW  
 CRI: Ra>80  
 Voltage: 220-240VAC  
 Material: Ceramic + PC  
 Base: G9  
 Remark: **Non-dimmable, No Flicker**



Model: SNS-G9-2835W-66LED  
 Dimension: Ø18.6X55.5mm  
 LED type: 66pcs SMD2835  
 Power: 4.0W±0.3W  
 Lumens: 500lm±10%  
 Beam angle: 360°  
 Color: WW, NW, CW  
 CRI: Ra>80  
 Voltage: 220-240VAC  
 Material: Ceramic + PC  
 Base: G9  
 Remark: **Non-dimmable, No Flicker**



## G9 LED Bulb Series



Model: SNS-G9-2835B-64LED  
 Dimension: Ø18.6X62mm  
 LED type: 64pcs SMD2835  
 Power: 4.0W±0.3W  
 Lumens: 520lm - 560lm - 540lm  
 Beam angle: 360°  
 Color: 2800K-4000K-6000K  
 CRI: Ra>80  
 Voltage: 220-240VAC  
 Material: Ceramic + PC  
 Base: G9

Remark: **Three Color Contorl, No Flicker**



Model: SNS-G9-4014B-60LED  
 Dimension: Ø16.5X54mm  
 LED type: 60pcs SMD4014  
 Power: 3.2W±0.3W  
 Lumens: 370lm - 410lm - 390lm  
 Beam angle: 360°  
 Color: 2800K-4000K-6000K  
 CRI: Ra>80  
 Voltage: 220-240VAC  
 Material: Ceramic + PC  
 Base: G9

Remark: **Three Color Contorl, No Flicker**



Model: SNS-G9-4014B-34LED  
 Dimension: Ø16.5X47.5mm  
 LED type: 34pcs SMD4014  
 Power: 2.6W±0.3W  
 Lumens: 320lm - 360lm - 340lm  
 Beam angle: 360°  
 Color: 2800K-4000K-6000K  
 CRI: Ra>80  
 Voltage: 220-240VAC  
 Material: Ceramic + PC  
 Base: G9

Remark: **Three Color Contorl, No Flicker**



Model: SNS-G9-2835-16LED  
 Dimension: Ø15X42.5mm  
 LED type: 16pcs SMD2835  
 Power: 2.1W±0.3W  
 Lumens: 270lm±10%  
 Beam angle: 360°  
 Color: WW, NW, CW  
 CRI: Ra>80  
 Voltage: 220-240VAC  
 Material: Ceramic + PC  
 Base: G9

Remark: **Non-dimmable, No Flicker**



Model: SNS-G9-2835-33LED  
 Dimension: Ø16.6X47.5mm  
 LED type: 33pcs SMD2835  
 Power: 2.7W±0.3W  
 Lumens: 350lm±10%  
 Beam angle: 360°  
 Color: WW, NW, CW  
 CRI: Ra>80  
 Voltage: 220-240VAC  
 Material: Ceramic + PC  
 Base: G9

Remark: **Non-dimmable, No Flicker**



Model: SNS-G9-2835-51LED  
 Dimension: Ø16X50mm  
 LED type: 51pcs SMD2835  
 Power: 3.3W±0.3W  
 Lumens: 330lm±10%  
 Beam angle: 360°  
 Color: WW, NW, CW  
 CRI: Ra>80  
 Voltage: 110-130V, 220-240VAC  
 Material: Ceramic + PC  
 Base: G9

Remark: **Non-dimmable**



Model: SNS-G9-2835-8LED  
 Dimension: Ø17.6X62mm  
 LED type: 8pcs SMD2835  
 Power: 2.0W±0.3W  
 Lumens: 200lm±10%  
 Beam angle: 360°  
 Color: WW, NW, CW  
 CRI: Ra>80  
 Voltage: 220-240VAC  
 Material: Ceramic + PC  
 Base: G9

Remark: **Dimmable, Light guide column**



Model: SNS-G9-4014-63LED  
 Dimension: Ø16.5X54mm  
 LED type: 63pcs SMD4014  
 Power: 3.2W±0.3W  
 Lumens: 450lm±10%  
 Beam angle: 360°  
 Color: WW, NW, CW  
 CRI: Ra>80  
 Voltage: 12-24VAC/DC  
 Material: Ceramic + PC  
 Base: G9

Remark: **Dimmable, 12-24VAC/DC**

## G9 LED Bulb Series



Model: SNS-G9-2835W-64LED  
 Dimension: Ø16.8X60mm  
 LED type: 64pcs SMD2835  
 Power: 3.5W±0.3W  
 Lumens: 380lm±10%  
 Beam angle: 360°  
 Color: WW, NW, CW  
 CRI: Ra>80  
 Voltage: 220-240VAC  
 Material: Silicone Glue  
 Base: G9

Remark: **Non-dimmable, No Flicker**



Model: SNS-G9-2835L-56LED  
 Dimension: Ø16.5X60mm  
 LED type: 56pcs SMD2835  
 Power: 3.0W±0.3W  
 Lumens: 260lm±10%  
 Beam angle: 360°  
 Color: WW, NW, CW  
 CRI: Ra>80  
 Voltage: 100-240VAC  
 Material: Silicone Glue  
 Base: G9

Remark: **Non-dimmable, No Flicker**



Model: SNS-G9-2835-32LED  
 Dimension: Ø15X48mm  
 LED type: 32pcs SMD2835  
 Power: 2.3W±0.3W  
 Lumens: 200lm±10%  
 Beam angle: 360°  
 Color: WW, NW, CW  
 CRI: Ra>80  
 Voltage: 110-130VAC / 220-240VAC  
 Material: Silicone Glue  
 Base: G9

Remark: **Non-dimmable**



Model: SNS-G9-3014-104LED  
 Dimension: Ø15X60mm  
 LED type: 104pcs SMD3014  
 Power: 3.6W±0.3W  
 Lumens: 360lm±10%  
 Beam angle: 360°  
 Color: WW, NW, CW  
 CRI: Ra>80  
 Voltage: 110-130VAC / 220-240VAC  
 Material: Silicone Glue  
 Base: G9

Remark: **Non-dimmable**



Model: SNS-G9-3014-64LED  
 Dimension: Ø15X48mm  
 LED type: 64pcs SMD3014  
 Power: 2.5W±0.3W  
 Lumens: 240lm±10%  
 Beam angle: 360°  
 Color: WW, NW, CW  
 CRI: Ra>80  
 Voltage: 110-130VAC / 220-240VAC  
 Material: Silicone Glue  
 Base: G9

Remark: **Non-dimmable**



Model: SNS-G9-3014D-64LED  
 Dimension: Ø15X48mm  
 LED type: 64pcs SMD3014  
 Power: 2.7W±0.3W  
 Lumens: 220lm±10%  
 Beam angle: 360°  
 Color: WW, NW, CW  
 CRI: Ra>80  
 Voltage: 110-130VAC / 220-240VAC  
 Material: Silicone Glue  
 Base: G9

Remark: **Dimmable**



Model: SNS-G9-4014C-46LED  
 Dimension: Ø17.5X53mm  
 LED type: 46pcs SMD2835  
 Power: 4.2W±0.3W  
 Lumens: 470lm±10%  
 Beam angle: 360°  
 Color: WW, NW, CW  
 CRI: Ra>80  
 Voltage: 220-240VAC  
 Material: Silicone Glue  
 Base: G9

Remark: **Non-dimmable**



Model: SNS-G9-4014D-46LED  
 Dimension: Ø17.5X53mm  
 LED type: 46pcs SMD2835  
 Power: 3.5W±0.3W  
 Lumens: 430lm±10%  
 Beam angle: 360°  
 Color: WW, NW, CW  
 CRI: Ra>80  
 Voltage: 110-130VAC  
 Material: Silicone Glue  
 Base: G9

Remark: **Dimmable**



# G4 LED Bulb Series



Model: SNS-G4-0705-1WA  
 Dimension: Ø9.6X30mm  
 LED type: 1pc 0705COB  
 Power: 1.1W±0.3W  
 Lumens: 110lm±10%  
 Beam angle: 360°  
 Color: WW, NW, CW  
 CRI: Ra>80  
 Voltage: 12VAC/DC, 10-24VAC&10-30VDC  
 Material: Silicone Glue  
 Remark: **Non-dimmable**  
 Base: G4



Model: SNS-G4-0705-1WB  
 Dimension: Ø9.6X30mm  
 LED type: 1pc 0705COB  
 Power: 1.1W±0.3W  
 Lumens: 90lm±10%  
 Beam angle: 360°  
 Color: WW, NW, CW  
 CRI: Ra>80  
 Voltage: 10-20VAC/DC  
 Material: Milky White Silicone Glue  
 Base: G4  
 Remark: **Dimmable**



Model: SNS-G4-1505-1.5WA  
 Dimension: Ø10X37.5mm  
 LED type: 1pc 1505COB  
 Power: 1.8W±0.3W  
 Lumens: 200lm±10%  
 Beam angle: 360°  
 Color: WW, NW, CW  
 CRI: Ra>80  
 Voltage: 12VAC/DC, 10-24VAC&10-30VDC  
 Material: Silicone Glue  
 Remark: **Non-dimmable**  
 Base: G4



Model: SNS-G4-1505-1.5WB  
 Dimension: Ø10X37.5mm  
 LED type: 1pc 1505COB  
 Power: 1.6W±0.3W  
 Lumens: 160lm±10%  
 Beam angle: 360°  
 Color: WW, NW, CW  
 CRI: Ra>80  
 Voltage: 10-20VAC/DC  
 Material: Milky White Silicone Glue  
 Base: G4  
 Remark: **Dimmable**



Model: SNS-G4-1508-2.5WA  
 Dimension: Ø12.5X37mm  
 LED type: 1pc 1508COB  
 Power: 2.5W±0.3W  
 Lumens: 330lm±10%  
 Beam angle: 360°  
 Color: WW, NW, CW  
 CRI: Ra>80  
 Voltage: 12VAC/DC, 10-24VAC&10-30VDC  
 Material: Silicone Glue  
 Remark: **Non-dimmable**  
 Base: G4



Model: SNS-G4-1508-2.5WB  
 Dimension: Ø12.5X37mm  
 LED type: 1pc 1508COB  
 Power: 2.5W±0.3W  
 Lumens: 280lm±10%  
 Beam angle: 360°  
 Color: WW, NW, CW  
 CRI: Ra>80  
 Voltage: 12VAC/DC, 10-24VAC&10-30VDC  
 Material: Milky White Silicone Glue  
 Remark: **Non-dimmable**  
 Base: G4



Model: SNS-G4-2835-10LED  
 Dimension: Ø10X37.5mm  
 LED type: 10pcs SMD2835  
 Power: 2.0W±0.3W  
 Lumens: 230lm±10%  
 Beam angle: 360°  
 Color: WW, NW, CW  
 CRI: Ra>80  
 Voltage: 12VAC/DC, 10-24VAC&10-30VDC  
 Material: Silicone Glue  
 Remark: **Non-dimmable**  
 Base: G4



Model: SNS-G4-2835-20LED  
 Dimension: Ø12.5X37mm  
 LED type: 20pcs SMD2835  
 Power: 2.5W±0.3W  
 Lumens: 310lm±10%  
 Beam angle: 360°  
 Color: WW, NW, CW  
 CRI: Ra>80  
 Voltage: 12VAC/DC, 10-24VAC&10-30VDC  
 Material: Silicone Glue  
 Remark: **Non-dimmable**  
 Base: G4

# G4 LED Bulb Series



Model: SNS-G4-4014D-45LED  
 Dimension: Ø13.5X41mm  
 LED type: 45pcs SMD4014  
 Power: 2.2W±0.3W  
 Lumens: 300lm±10%  
 Beam angle: 360°  
 Color: WW, NW, CW  
 CRI: Ra>80  
 Voltage: 12-24VAC/DC  
 Material: Ceramic + PC  
 Base: G4  
 Remark: **Dimmable**



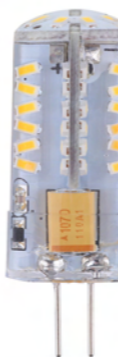
Model: SNS-G4-4014D-63LED  
 Dimension: Ø16.5X44mm  
 LED type: 63pcs SMD4014  
 Power: 3.2W±0.3W  
 Lumens: 450lm±10%  
 Beam angle: 360°  
 Color: WW, NW, CW  
 CRI: Ra>80  
 Voltage: 12-24VAC/DC  
 Material: Ceramic + PC  
 Base: G4  
 Remark: **Dimmable**



Model: SNS-G4-3014-24LED  
 Dimension: Ø9X35.5mm  
 LED type: 24pcs SMD3014  
 Power: 1.1W±0.3W  
 Lumens: 95lm±10%  
 Beam angle: 360°  
 Color: WW, NW, CW  
 CRI: Ra>80  
 Voltage: 12VDC (**Dimmable**)  
 10-24VAC&10-30VDC (**Non-dimmable**)  
 Material: Silicone Glue  
 Base: G4



Model: SNS-G4-3014-48LED  
 Dimension: Ø12.5X37.3mm  
 LED type: 48pcs SMD3014  
 Power: 1.8W±0.3W  
 Lumens: 170lm±10%  
 Beam angle: 360°  
 Color: WW, NW, CW  
 CRI: Ra>80  
 Voltage: 12VDC (**Dimmable**)  
 10-20VAC/DC (**Non-dimmable**)  
 Material: Silicone Glue  
 Base: G4



Model: SNS-G4-3014-57LED  
 Dimension: Ø16X42mm  
 LED type: 57pcs SMD3014  
 Power: 2.2W±0.3W  
 Lumens: 220lm±10%  
 Beam angle: 360°  
 Color: WW, NW, CW  
 CRI: Ra>80  
 Voltage: 12VDC (**Dimmable**)  
 10-20VAC/DC (**Non-dimmable**)  
 Material: Silicone Glue  
 Base: G4



Model: SNS-G4-4014T-54LED  
 Dimension: Ø16.5X45mm  
 LED type: 54pcs SMD4014  
 Power: 2.5W±0.3W  
 Lumens: 320lm - 340lm - 330lm  
 Beam angle: 360°  
 Color: 2800-4000K-6000K  
 CRI: Ra>80  
 Voltage: 12VAC/DC  
 Material: Ceramic + PC  
 Base: G4  
 Remark: **Three Color Contorl**



Model: SNS-G4-2835-12LED  
 Dimension: Ø12X37mm  
 LED type: 12pcs SMD2835  
 Power: 1.1W±0.3W  
 Lumens: 90lm±10%  
 Beam angle: 360°  
 Color: WW, NW, CW  
 CRI: Ra>80  
 Voltage: 12VAC/DC  
 Material: PC  
 Base: G4  
 Remark: **Non-dimmable**



Model: SNS-G4-2835-36LED  
 Dimension: Ø15.6X54.8mm  
 LED type: 36pcs SMD2835  
 Power: 0.5W±0.3W  
 Lumens: 10lm±10%  
 Beam angle: 360°  
 Color: 1400K, 1800K  
 CRI: Ra>80  
 Voltage: 10-20VAC/DC  
 Material: Ceramic + PC  
 Base: G4  
 Remark: **Non-dimmable, Flame Light**





## G4 LED Bulb 12V No Filcker Series



Model: SNS-G4-0705W-1W  
 Dimension: Ø11X34mm  
 LED type: 1pc 0705COB  
 Power: 1.2W±0.3W  
 Lumens: 110lm±10%  
 Beam angle: 360°  
 Color: WW, NW, CW  
 CRI: Ra>80  
 Voltage: 12VAC/DC  
 Material: Silicone Glue  
 Base: G4  
 Remark: **Non-dimmable, No Flicker**



Model: SNS-G4-1505W-1.5W  
 Dimension: Ø10.4X41.2mm  
 LED type: 1pc 1505COB  
 Power: 1.6W±0.3W  
 Lumens: 180lm±10%  
 Beam angle: 360°  
 Color: WW, NW, CW  
 CRI: Ra>80  
 Voltage: 12VAC/DC  
 Material: Silicone Glue  
 Base: G4  
 Remark: **Non-dimmable, No Flicker**



Model: SNS-G4-1508LW-2.5W  
 Dimension: Ø13X47.5mm  
 LED type: 1pc 1508COB  
 Power: 2.0W±0.3W  
 Lumens: 260lm±10%  
 Beam angle: 360°  
 Color: WW, NW, CW  
 CRI: Ra>80  
 Voltage: 12VAC/DC  
 Material: Silicone Glue  
 Base: G4  
 Remark: **Non-dimmable, No Flicker**



Model: SNS-G4-1508W-2.5W  
 Dimension: Ø13.2X41.3mm  
 LED type: 1pc 1508COB  
 Power: 2.0W±0.3W  
 Lumens: 260lm±10%  
 Beam angle: 360°  
 Color: WW, NW, CW  
 CRI: Ra>80  
 Voltage: 12VAC/DC  
 Material: Silicone Glue  
 Base: G4  
 Remark: **Non-dimmable, No Flicker**



Model: SNS-G4-2609W-3W  
 Dimension: Ø17.5X53mm  
 LED type: 1pc 2609COB  
 Power: 3.0W±0.3W  
 Lumens: 380lm±10%  
 Beam angle: 360°  
 Color: WW, NW, CW  
 CRI: Ra>80  
 Voltage: 12VAC/DC  
 Material: Silicone Glue  
 Base: G4  
 Remark: **Non-dimmable, No Flicker**



Model: SNS-G4-3014W-24LED  
 Dimension: Ø10X36mm  
 LED type: 24pcs SMD3014  
 Power: 1.2W±0.3W  
 Lumens: 100lm±10%  
 Beam angle: 360°  
 Color: WW, NW, CW  
 CRI: Ra>80  
 Voltage: 12VAC/DC  
 Material: Silicone Glue  
 Base: G4  
 Remark: **Non-dimmable, No Flicker**



Model: SNS-G4-3014W-48LED  
 Dimension: Ø13X37.2mm  
 LED type: 48pcs SMD3014  
 Power: 2.2W±0.3W  
 Lumens: 200lm±10%  
 Beam angle: 360°  
 Color: WW, NW, CW  
 CRI: Ra>80  
 Voltage: 12VAC/DC  
 Material: Silicone Glue  
 Base: G4  
 Remark: **Non-dimmable, No Flicker**



Model: SNS-G4-2835W-24LED  
 Dimension: Ø12X37mm  
 LED type: 24pcs SMD2835  
 Power: 1.7W±0.3W  
 Lumens: 140lm±10%  
 Beam angle: 360°  
 Color: WW, NW, CW  
 CRI: Ra>80  
 Voltage: 12VAC/DC  
 Material: Silicone Glue  
 Base: G4  
 Remark: **Non-dimmable, No Flicker**

## G4 LED Bulb 12V No Flicker Series



Model: SNS-G4-2835W-6LED  
 Dimension: Ø10X38mm  
 LED type: 6pcs SMD2835  
 Power: 1.2W±0.3W  
 Lumens: 120lm±10%  
 Beam angle: 360°  
 Color: WW, NW, CW  
 CRI: Ra>80  
 Voltage: 12VAC/DC  
 Material: PC  
 Base: G4  
 Remark: **Non-dimmable, No Flicker**



Model: SNS-G4-2835W-8LED  
 Dimension: Ø11X38mm  
 LED type: 8pcs SMD2835  
 Power: 1.4W±0.3W  
 Lumens: 140lm±10%  
 Beam angle: 360°  
 Color: WW, NW, CW  
 CRI: Ra>80  
 Voltage: 12VAC/DC  
 Material: Silicone Glue  
 Base: G4  
 Remark: **Non-dimmable, No Flicker**



Model: SNS-G4-2835W-16LED  
 Dimension: Ø12.5X37mm  
 LED type: 16pcs SMD2835  
 Power: 1.8W±0.3W  
 Lumens: 180lm±10%  
 Beam angle: 360°  
 Color: WW, NW, CW  
 CRI: Ra>80  
 Voltage: 12VAC/DC  
 Material: Silicone Glue  
 Base: G4  
 Remark: **Non-dimmable, No Flicker**



Model: SNS-G4-2835W-20LED  
 Dimension: Ø13.2X41.3mm  
 LED type: 20pcs SMD2835  
 Power: 2.0W±0.3W  
 Lumens: 200lm±10%  
 Beam angle: 360°  
 Color: WW, NW, CW  
 CRI: Ra>80  
 Voltage: 12VAC/DC  
 Material: Silicone Glue  
 Base: G4  
 Remark: **Non-dimmable, No Flicker**



Model: SNS-G4-2835W-12LED  
 Dimension: Ø12X39mm  
 LED type: 12pcs SMD2835  
 Power: 1.2W±0.3W  
 Lumens: 120lm±10%  
 Beam angle: 360°  
 Color: WW, NW, CW  
 CRI: Ra>80  
 Voltage: 12VAC/DC  
 Material: PC  
 Base: G4  
 Remark: **Non-dimmable, No Flicker**



Model: SNS-G4-2835W-48LED  
 Dimension: Ø16.5X45mm  
 LED type: 48pcs SMD2835  
 Power: 3.1W±0.3W  
 Lumens: 380lm±10%  
 Beam angle: 360°  
 Color: WW, NW, CW  
 CRI: Ra>80  
 Voltage: 12VAC/DC  
 Material: Ceramic + PC  
 Base: G4  
 Remark: **Non-dimmable, No Flicker**



Model: SNS-G4-4014W-45LED  
 Dimension: Ø13.5X41mm  
 LED type: 45pcs SMD4014  
 Power: 2.2W±0.3W  
 Lumens: 290lm±10%  
 Beam angle: 360°  
 Color: WW, NW, CW  
 CRI: Ra>80  
 Voltage: 12VAC/DC  
 Material: Ceramic + PC  
 Base: G4  
 Remark: **Non-dimmable, No Flicker**



Model: SNS-G4-4014W-63LED  
 Dimension: Ø16.5X44mm  
 LED type: 63pcs SMD4014  
 Power: 3.2W±0.3W  
 Lumens: 430lm±10%  
 Beam angle: 360°  
 Color: WW, NW, CW  
 CRI: Ra>80  
 Voltage: 12VAC/DC  
 Material: Ceramic + PC  
 Base: G4  
 Remark: **Non-dimmable, No Flicker**



## G4 LED Bulb 110V/220V Series



Model: SNS-G4-4014C-54LED  
 Dimension: Ø16.5X45mm  
 LED type: 54pcs SMD4014  
 Power: 3.1W±0.3W  
 Lumens: 450lm±10%  
 Beam angle: 360°  
 Color: WW, NW, CW  
 CRI: Ra>80  
 Voltage: 100-240VAC  
 Material: Ceramic + PC  
 Base: G4  
 Remark: **Non-dimmable, No Flicker**



Model: SNS-G4-4014C-46LED  
 Dimension: Ø16.5X45mm  
 LED type: 46pcs SMD4014  
 Power: 3.1W±0.3W  
 Lumens: 350lm±10%  
 Beam angle: 360°  
 Color: WW, NW, CW  
 CRI: Ra>80  
 Voltage: 220-240VAC  
 Material: Ceramic + PC  
 Base: G4  
 Remark: **0-100% Dimmable, No Flicker**



Model: SNS-G4-4014C-31LED  
 Dimension: Ø13.5X41mm  
 LED type: 31pcs SMD4014  
 Power: 2.0W±0.3W  
 Lumens: 260lm±10%  
 Beam angle: 360°  
 Color: WW, NW, CW  
 CRI: Ra>80  
 Voltage: 220-240VAC  
 Material: Ceramic + PC  
 Base: G4  
 Remark: **Non-dimmable, No Flicker**



Model: SNS-G4-4014T-60LED  
 Dimension: Ø16.5X45mm  
 LED type: 60pcs SMD4014  
 Power: 3.0W±0.3W  
 Lumens: 370lm - 410lm - 390lm  
 Beam angle: 360°  
 Color: 2800-4000K-6000K  
 CRI: Ra>80  
 Voltage: 220-240VAC  
 Material: Ceramic + PC  
 Base: G4  
 Remark: **Three Color Control, No Flicker**



Model: SNS-G4-2835T-24LED  
 Dimension: Ø10X37mm  
 LED type: 24pcs SMD2835  
 Power: 1.3W±0.3W  
 Lumens: 110lm±10%  
 Beam angle: 360°  
 Color: 2800-4000K-6000K  
 CRI: Ra>80  
 Voltage: 220-240VAC  
 Material: Silicone Glue  
 Base: G4  
 Remark: **Three Color Control, No Flicker**



Model: SNS-G4-4014T-24LED  
 Dimension: Ø10X40.5mm  
 LED type: 24pcs SMD4014  
 Power: 1.3W±0.3W  
 Lumens: 100lm±10%  
 Beam angle: 360°  
 Color: 2800-4000K-6000K  
 CRI: Ra>80  
 Voltage: 220-240VAC  
 Material: Silicone Glue  
 Base: G4  
 Remark: **Three Color Control, No Flicker**



Model: SNS-G4-1505C-1.5WA  
 Dimension: Ø10.2X37.5mm  
 LED type: 1pc 1505COB  
 Power: 1.2W±0.3W  
 Lumens: 120lm±10%  
 Beam angle: 360°  
 Color: WW, NW, CW  
 CRI: Ra>80  
 Voltage: 220-240VAC  
 Material: Silicone Glue  
 Base: G4  
 Remark: **Non-dimmable**



Model: SNS-G4-1505CD-1.5WA  
 Dimension: Ø10.2X37.5mm  
 LED type: 1pc 1505COB  
 Power: 1.5W±0.3W  
 Lumens: 190lm±10%  
 Beam angle: 360°  
 Color: WW, NW, CW  
 CRI: Ra>80  
 Voltage: 110-130VAC / 220-240VAC  
 Material: Silicone Glue  
 Base: G4  
 Remark: **Dimmable**

## G4 LED Bulb 110V/220V Series



Model: SNS-G4-2609C-2.5WA  
 Dimension: Ø16.2X53.5mm  
 LED type: 1pc 2609COB  
 Power: 2.3W±0.3W  
 Lumens: 270lm±10%  
 Beam angle: 360°  
 Color: WW, NW, CW  
 CRI: Ra>80  
 Voltage: 110-130VAC / 220-240VAC  
 Material: Silicone Glue + Ceramic + PC  
 Base: G4  
 Remark: **Non-dimmable**



Model: SNS-G4-4014C-16LED  
 Dimension: Ø10X40.5mm  
 LED type: 16pcs SMD4014  
 Power: 1.4W±0.3W  
 Lumens: 105lm±10%  
 Beam angle: 360°  
 Color: WW, NW, CW  
 CRI: Ra>80  
 Voltage: 220-240VAC  
 Material: Silicone Glue  
 Base: G4  
 Remark: **Non-dimmable, No Flicker**



Model: SNS-G4-2835C-10LED  
 Dimension: Ø10X36.6mm  
 LED type: 10pcs SMD2835  
 Power: 2.0W±0.3W  
 Lumens: 190lm±10%  
 Beam angle: 360°  
 Color: WW, NW, CW  
 CRI: Ra>80  
 Voltage: 220-240VAC  
 Material: Silicone Glue  
 Base: G4  
 Remark: **Non-dimmable**



Model: SNS-G4-2835C-16LED  
 Dimension: Ø13X37mm  
 LED type: 16pcs SMD2835  
 Power: 1.8W±0.3W  
 Lumens: 150lm±10%  
 Beam angle: 360°  
 Color: WW, NW, CW  
 CRI: Ra>80  
 Voltage: 220-240VAC  
 Material: Silicone Glue  
 Base: G4  
 Remark: **Non-dimmable, No Flicker**



Model: SNS-G4-2835C-20LED  
 Dimension: Ø13X37mm  
 LED type: 20pcs SMD2835  
 Power: 2.6W±0.3W  
 Lumens: 240lm±10%  
 Beam angle: 360°  
 Color: WW, NW, CW  
 CRI: Ra>80  
 Voltage: 220-240VAC  
 Material: Silicone Glue  
 Base: G4  
 Remark: **Non-dimmable**



Model: SNS-G4-3014C-24LED  
 Dimension: Ø9X35.5mm  
 LED type: 24pcs SMD3014  
 Power: 1.2W±0.3W  
 Lumens: 70lm±10%  
 Beam angle: 360°  
 Color: WW, NW, CW  
 CRI: Ra>80  
 Voltage: 110-130VAC / 220-240VAC  
 Material: Silicone Glue  
 Base: G4  
 Remark: **Non-dimmable**



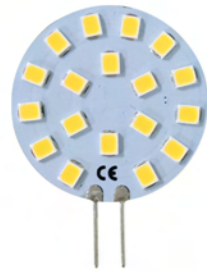
Model: SNS-G4-3014C-64LED  
 Dimension: Ø15X41mm  
 LED type: 64pcs SMD3014  
 Power: 2.6W±0.3W  
 Lumens: 230lm±10%  
 Beam angle: 360°  
 Color: WW, NW, CW  
 CRI: Ra>80  
 Voltage: 110-130VAC / 220-240VAC  
 Material: Silicone Glue  
 Base: G4  
 Remark: **Dimmable**



Model: SNS-G4-3014C-104LED  
 Dimension: Ø14.5X51.5mm  
 LED type: 104pcs SMD3014  
 Power: 3.6W±0.3W  
 Lumens: 360lm±10%  
 Beam angle: 360°  
 Color: WW, NW, CW  
 CRI: Ra>80  
 Voltage: 110-130VAC / 220-240VAC  
 Material: Silicone Glue  
 Base: G4  
 Remark: **Non-dimmable**



## G4 LED Bulb Series



Model: SNS-G4-018H  
 Dimension: Ø30X40mm  
 LED type: 18pcs SMD2835  
 Power: 3.0W±0.3W  
 Lumens: 300lm±10%  
 Beam angle: 120°  
 Color: WW, NW, CW  
 CRI: Ra>80  
 Voltage: 12-36VAC&12-50VDC  
 Material: Aluminum  
 Base: G4  
 Remark: **Non-dimmable**



Model: SNS-G4-018V  
 Dimension: Ø30X28mm  
 LED type: 18pcs SMD2835  
 Power: 3.0W±0.3W  
 Lumens: 300lm±10%  
 Beam angle: 120°  
 Color: WW, NW, CW  
 CRI: Ra>80  
 Voltage: 12-36VAC&12-50VDC  
 Material: Aluminum  
 Base: G4  
 Remark: **Non-dimmable**



Model: SNS-G4-015H  
 Dimension: Ø30X41mm  
 LED type: 15pcs SMD2835  
 Power: 2.6W±0.3W  
 Lumens: 280lm±10%  
 Beam angle: 120°  
 Color: WW, NW, CW  
 CRI: Ra>80  
 Voltage: 10-18VAC&10-30VDC  
 Material: Aluminum  
 Base: G4  
 Remark: **Non-dimmable**



Model: SNS-G4-012H  
 Dimension: Ø30X41mm  
 LED type: 12pcs SMD2835  
 Power: 2.3W±0.3W  
 Lumens: 260lm±10%  
 Beam angle: 120°  
 Color: WW, NW, CW  
 CRI: Ra>80  
 Voltage: 10-18VAC&10-30VDC  
 Material: Aluminum  
 Base: G4  
 Remark: **Non-dimmable**



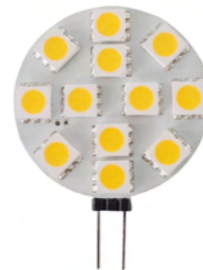
Model: SNS-G4-5050-6LED  
 Dimension: Ø25X35mm  
 LED type: 6pcs SMD5050  
 Power: 1.2W±0.3W  
 Lumens: 100lm±10%  
 Beam angle: 120°  
 Color: WW, NW, CW  
 CRI: Ra>80  
 Voltage: 12-24VDC  
 Material: Aluminum  
 Base: G4  
 Remark: **Non-dimmable**



Model: SNS-G4-5050-9LED  
 Dimension: Ø28X35mm  
 LED type: 6pcs SMD5050  
 Power: 1.8W±0.3W  
 Lumens: 150lm±10%  
 Beam angle: 120°  
 Color: WW, NW, CW  
 CRI: Ra>80  
 Voltage: 12-24VDC  
 Material: Aluminum  
 Base: G4  
 Remark: **Non-dimmable**



Model: SNS-G4-5050-10LED  
 Dimension: Ø31X35mm  
 LED type: 10pcs SMD5050  
 Power: 2.0W±0.3W  
 Lumens: 165lm±10%  
 Beam angle: 120°  
 Color: WW, NW, CW  
 CRI: Ra>80  
 Voltage: 12-24VDC  
 Material: Aluminum  
 Base: G4  
 Remark: **Non-dimmable**



Model: SNS-G4-5050-12LED  
 Dimension: Ø31X35mm  
 LED type: 12pcs SMD5050  
 Power: 2.4W±0.3W  
 Lumens: 200lm±10%  
 Beam angle: 120°  
 Color: WW, NW, CW  
 CRI: Ra>80  
 Voltage: 12-24VDC  
 Material: Aluminum  
 Base: G4  
 Remark: **Non-dimmable**

## G4 LED Bulb Series



Model: SNS-G4-5630-9LED  
 Dimension: Ø26XL38mm  
 LED type: 9pcs SMD5630  
 Power: 2.0W±0.3W  
 Lumens: 250lm±10%  
 Beam angle: 120°  
 Color: WW, NW, CW  
 CRI: Ra>80  
 Voltage: 8-18VAC&10-30VDC  
 Material: Aluminum  
 Base: G4  
 Remark: **Non-dimmable**



Model: SNS-G4-5630-12LED  
 Dimension: Ø30XL42mm  
 LED type: 12pcs SMD5630  
 Power: 2.4W±0.3W  
 Lumens: 300lm±10%  
 Beam angle: 120°  
 Color: WW, NW, CW  
 CRI: Ra>80  
 Voltage: 8-18VAC&10-30VDC  
 Material: Aluminum  
 Base: G4  
 Remark: **Non-dimmable**



Model: SNS-G4-009T  
 Dimension: Ø12X30mm  
 LED type: 9pcs SMD5050  
 Power: 1.1W±0.3W  
 Lumens: 110lm±10%  
 Beam angle: 360°  
 Color: WW, NW, CW  
 CRI: Ra>80  
 Voltage: 12VDC  
 Material: Aluminum  
 Base: G4  
 Remark: **Dimmable**



Model: SNS-G4-013T  
 Dimension: Ø12X32mm  
 LED type: 13pcs SMD5050  
 Power: 1.6W±0.3W  
 Lumens: 160lm±10%  
 Beam angle: 360°  
 Color: WW, NW, CW  
 CRI: Ra>80  
 Voltage: 12VDC  
 Material: Aluminum  
 Base: G4  
 Remark: **Dimmable**



Model: SNS-G4-018T  
 Dimension: Ø19X37mm  
 LED type: 18pcs SMD5050  
 Power: 2.3W±0.3W  
 Lumens: 230lm±10%  
 Beam angle: 360°  
 Color: WW, NW, CW  
 CRI: Ra>80  
 Voltage: 12VDC  
 Material: Aluminum  
 Base: G4  
 Remark: **Dimmable**



Model: SNS-G4-027T  
 Dimension: Ø19X37.5mm  
 LED type: 27pcs SMD5050  
 Power: 3.3W±0.3W  
 Lumens: 330lm±10%  
 Beam angle: 360°  
 Color: WW, NW, CW  
 CRI: Ra>80  
 Voltage: 12VDC  
 Material: Aluminum  
 Base: G4  
 Remark: **Dimmable**



Model: SNS-G4-036T  
 Dimension: Ø19X49.5mm  
 LED type: 36pcs SMD5050  
 Power: 4.2W±0.3W  
 Lumens: 420lm±10%  
 Beam angle: 360°  
 Color: WW, NW, CW  
 CRI: Ra>80  
 Voltage: 12VDC  
 Material: Aluminum  
 Base: G4  
 Remark: **Dimmable**



Model: SNS-G4-049T  
 Dimension: Ø25X46mm  
 LED type: 49pcs SMD5050  
 Power: 5.5W±0.3W  
 Lumens: 550lm±10%  
 Beam angle: 360°  
 Color: WW, NW, CW  
 CRI: Ra>80  
 Voltage: 12VDC  
 Material: Aluminum  
 Base: G4  
 Remark: **Dimmable**



## GY6.35 LED Bulb Series



Model: SNS-GY6.35-1508-2.5WA  
 Dimension: Ø12.5X37.5mm  
 LED type: 1pcs 1508COB LED  
 Power: 2.5W±0.3W  
 Lumens: 330lm±10%  
 Beam angle: 360°  
 Color: WW, NW, CW  
 CRI: Ra>80  
 Voltage: 10-20VAC/DC  
 Material: Silicone Glue  
 Base: GY6.35  
 Remark: **Dimmable**



Model: SNS-GY6.35-2835K-20LED  
 Dimension: Ø12.5X37.5mm  
 LED type: 20pcs SMD2835  
 Power: 2.5W±0.3W  
 Lumens: 330lm±10%  
 Beam angle: 360°  
 Color: WW, NW, CW  
 CRI: Ra>80  
 Voltage: 10-24VAC&10-30VDC  
 Material: Silicone Glue  
 Base: GY6.35  
 Remark: **Non-dimmable**



Model: SNS-GY6.35-2835-20LED  
 Dimension: Ø12.5X37.5mm  
 LED type: 20pcs SMD2835  
 Power: 2.5W±0.3W  
 Lumens: 300lm±10%  
 Beam angle: 360°  
 Color: WW, NW, CW  
 CRI: Ra>80  
 Voltage: 10-20VAC/DC  
 Material: Silicone Glue  
 Base: GY6.35  
 Remark: **Dimmable**



Model: SNS-GY6.35-2835K-20LED  
 Dimension: Ø12.5X37.5mm  
 LED type: 20pcs SMD2835  
 Power: 2.5W±0.3W  
 Lumens: 280lm±10%  
 Beam angle: 360°  
 Color: WW, NW, CW  
 CRI: Ra>80  
 Voltage: 10-24VAC&10-30VDC  
 Material: Silicone Glue  
 Base: GY6.35  
 Remark: **Non-dimmable**



Model: SNS-GY6.35-3014-48LED  
 Dimension: Ø12.5X37.1mm  
 LED type: 48pcs SMD3014  
 Power: 1.7W±0.3W  
 Lumens: 170lm±10%  
 Beam angle: 360°  
 Color: WW, NW, CW  
 CRI: Ra>80  
 Voltage: 10-20VAC/DC  
 Material: Silicone Glue  
 Base: GY6.35  
 Remark: **Dimmable**



Model: SNS-GY6.35-3014K-48LED  
 Dimension: Ø12.5X37.1mm  
 LED type: 48pcs SMD3014  
 Power: 2.0W±0.3W  
 Lumens: 200lm±10%  
 Beam angle: 360°  
 Color: WW, NW, CW  
 CRI: Ra>80  
 Voltage: 10-24VAC&10-30VDC  
 Material: Silicone Glue  
 Base: GY6.35  
 Remark: **Non-dimmable**



Model: SNS-GY6.35-4014-54LED  
 Dimension: Ø16.5X45mm  
 LED type: 54pcs SMD4014  
 Power: 3.2W±0.3W  
 Lumens: 400lm±10%  
 Beam angle: 360°  
 Color: WW, NW, CW  
 CRI: Ra>80  
 Voltage: 100-240VAC  
 Material: Ceramic + PC  
 Base: G8  
 Remark: **Non-dimmable, No Flicker**



Model: SNS-GY6.35-5050-6LED  
 Dimension: Ø25XL37mm  
 LED type: 6pcs SMD5050  
 Power: 1.1W±0.3W  
 Lumens: 110lm±10%  
 Beam angle: 120°  
 Color: WW, NW, CW  
 CRI: Ra>80  
 Voltage: 8-18VAC&10-30VDC  
 Material: Aluminum  
 Base: GY6.35  
 Remark: **Non-dimmable**

## GY6.35 LED Bulb Series



Model: SNS-GY6.35-012H  
 Dimension: Ø30XL42mm  
 LED type: 12pcs SMD2835  
 Power: 2.3W±0.3W  
 Lumens: 230lm±10%  
 Beam angle: 120°  
 Color: WW, NW, CW  
 CRI: Ra>80  
 Voltage: 8-18VAC&10-30VDC  
 Material: Aluminum  
 Base: GY6.35  
 Remark: **Non-dimmable**



Model: SNS-GY6.35-015H  
 Dimension: Ø30XL42mm  
 LED type: 15pcs SMD2835  
 Power: 2.8W±0.3W  
 Lumens: 280lm±10%  
 Beam angle: 120°  
 Color: WW, NW, CW  
 CRI: Ra>80  
 Voltage: 8-18VAC&10-30VDC  
 Material: Aluminum  
 Base: GY6.35  
 Remark: **Non-dimmable**



Model: SNS-GY6.35-5630-9LED  
 Dimension: Ø26XL38mm  
 LED type: 9pcs SMD5630  
 Power: 2.0W±0.3W  
 Lumens: 250lm±10%  
 Beam angle: 120°  
 Color: WW, NW, CW  
 CRI: Ra>80  
 Voltage: 8-18VAC&10-30VDC  
 Material: Aluminum  
 Base: GY6.35  
 Remark: **Non-dimmable**



Model: SNS-GY6.35-5630-12LED  
 Dimension: Ø30XL42mm  
 LED type: 12pcs SMD5630  
 Power: 2.4W±0.3W  
 Lumens: 300lm±10%  
 Beam angle: 120°  
 Color: WW, NW, CW  
 CRI: Ra>80  
 Voltage: 8-18VAC&10-30VDC  
 Material: Aluminum  
 Base: GY6.35  
 Remark: **Non-dimmable**



Model: SNS-GY6.35-018T  
 Dimension: Ø19XL40.8mm  
 LED type: 18pcs SMD5050  
 Power: 2.5W±0.3W  
 Lumens: 250lm±10%  
 Beam angle: 360°  
 Color: WW, NW, CW  
 CRI: Ra>80  
 Voltage: 12VDC  
 Material: Aluminum  
 Base: GY6.35  
 Remark: **Dimmable**



Model: SNS-GY6.35-027T  
 Dimension: Ø19XL49mm  
 LED type: 27pcs SMD5050  
 Power: 3.3W±0.3W  
 Lumens: 330lm±10%  
 Beam angle: 360°  
 Color: WW, NW, CW  
 CRI: Ra>80  
 Voltage: 12VDC  
 Material: Aluminum  
 Base: GY6.35  
 Remark: **Dimmable**



Model: SNS-GY6.35-036T  
 Dimension: Ø19XL49mm  
 LED type: 36pcs SMD5050  
 Power: 4.0W±0.3W  
 Lumens: 400lm±10%  
 Beam angle: 360°  
 Color: WW, NW, CW  
 CRI: Ra>80  
 Voltage: 12VDC  
 Material: Aluminum  
 Base: GY6.35  
 Remark: **Dimmable**



Model: SNS-GY6.35-049T  
 Dimension: Ø25XL49mm  
 LED type: 49pcs SMD5050  
 Power: 5.5W±0.3W  
 Lumens: 550lm±10%  
 Beam angle: 360°  
 Color: WW, NW, CW  
 CRI: Ra>80  
 Voltage: 12VDC  
 Material: Aluminum  
 Base: GY6.35  
 Remark: **Dimmable**



## E12 LED Bulb Series



Model: SNS-E12-2835-88LED  
 Dimension: Ø19X60.6mm  
 LED type: 88pcs SMD2835  
 Power: 5.0W±0.3W  
 Lumens: 650lm±10%  
 Beam angle: 360°  
 Color: WW, NW, CW  
 CRI: Ra>80  
 Voltage: 110-130VAC / 220-240VAC  
 Material: Ceramic + PC  
 Base: E12  
 Remark: **Non-dimmable, No Flicker**



Model: SNS-E12-2835D-88LED  
 Dimension: Ø19X60.6mm  
 LED type: 88pcs SMD2835  
 Power: 5.0W±0.3W  
 Lumens: 650lm±10%  
 Beam angle: 360°  
 Color: WW, NW, CW  
 CRI: Ra>80  
 Voltage: 110-130VAC / 220-240VAC  
 Material: Ceramic + PC  
 Base: E12  
 Remark: **Dimmable**



Model: SNS-E12-4014-54LED  
 Dimension: Ø16.5X52.5mm  
 LED type: 54pcs SMD4014  
 Power: 3.3W±0.3W  
 Lumens: 450lm±10%  
 Beam angle: 360°  
 Color: WW, NW, CW  
 CRI: Ra>80  
 Voltage: 100-240VAC  
 Material: Ceramic + PC  
 Base: E12  
 Remark: **Non-dimmable, No Flicker**



Model: SNS-E12-2835-51LED  
 Dimension: Ø16X50mm  
 LED type: 51pcs SMD2835  
 Power: 3.3W±0.3W  
 Lumens: 330lm±10%  
 Beam angle: 360°  
 Color: WW, NW, CW  
 CRI: Ra>80  
 Voltage: 110-130VAC / 220-240VAC  
 Material: Ceramic + PC  
 Base: E12  
 Remark: **Non-dimmable**



Model: SNS-E12-4LED-2W  
 Dimension: Ø16X46mm  
 LED type: 4pcs COB  
 Power: 2.0W±0.3W  
 Lumens: 220lm±10%  
 Beam angle: 360°  
 Color: WW, NW, CW  
 CRI: Ra>80  
 Voltage: 110-130VAC / 220-240VAC  
 Material: Ceramic + PC  
 Base: E12  
 Remark: **Dimmable**



Model: SNS-E12-4LED-3W  
 Dimension: Ø16X60mm  
 LED type: 4pcs COB  
 Power: 3.0W±0.3W  
 Lumens: 380lm±10%  
 Beam angle: 360°  
 Color: WW, NW, CW  
 CRI: Ra>80  
 Voltage: 110-130VAC / 220-240VAC  
 Material: Ceramic + PC  
 Base: E12  
 Remark: **Dimmable**



Model: SNS-E12-2609-2.5WA  
 Dimension: Ø16X58mm  
 LED type: 1pc 2609COB  
 Power: 2.4W±0.3W  
 Lumens: 250lm±10%  
 Beam angle: 360°  
 Color: WW, NW, CW  
 CRI: Ra>80  
 Voltage: 110-130VAC / 220-240VAC  
 Material: Ceramic + Silicone Glue + PC  
 Base: E12  
 Remark: **Dimmable**



Model: SNS-E12-3014-104LED  
 Dimension: Ø15X63mm  
 LED type: 104pcs SMD4014  
 Power: 3.5W±0.3W  
 Lumens: 360lm±10%  
 Beam angle: 360°  
 Color: WW, NW, CW  
 CRI: Ra>80  
 Voltage: 110-130VAC / 220-240VAC  
 Material: Silicone Glue  
 Base: E12  
 Remark: **Non-dimmable**

## E12 LED Bulb Series



Model: SNS-E12-3014-57LED  
 Dimension: Ø15X52mm  
 LED type: 57pcs SMD4014  
 Power: 2.2W±0.3W  
 Lumens: 220lm±10%  
 Beam angle: 360°  
 Color: WW, NW, CW  
 CRI: Ra>80  
 Voltage: 10-20VAC/DC  
 Material: Silicone Glue  
 Base: E12  
 Remark: **Dimmable**



Model: SNS-E12-3014-81LED  
 Dimension: Ø15X64mm  
 LED type: 81pcs SMD4014  
 Power: 3.3W±0.3W  
 Lumens: 330lm±10%  
 Beam angle: 360°  
 Color: WW, NW, CW  
 CRI: Ra>80  
 Voltage: 10-20VAC/DC  
 Material: Silicone Glue  
 Base: E12  
 Remark: **Dimmable**



Model: SNS-E12-3014-64LED  
 Dimension: Ø15X52mm  
 LED type: 64pcs SMD4014  
 Power: 2.5W±0.3W  
 Lumens: 230lm±10%  
 Beam angle: 360°  
 Color: WW, NW, CW  
 CRI: Ra>80  
 Voltage: 110-130VAC / 220-240VAC  
 Material: Silicone Glue  
 Base: E12  
 Remark: **Non-dimmable**



Model: SNS-E12-3014D-64LED  
 Dimension: Ø15X52mm  
 LED type: 64pcs SMD4014  
 Power: 2.7W±0.3W  
 Lumens: 230lm±10%  
 Beam angle: 360°  
 Color: WW, NW, CW  
 CRI: Ra>80  
 Voltage: 110-130VAC / 220-240VAC  
 Material: Silicone Glue  
 Base: E12  
 Remark: **Dimmable**



Model: SNS-E12-2835-32LED  
 Dimension: Ø15X53mm  
 LED type: 32pcs SMD2835  
 Power: 2.3W±0.3W  
 Lumens: 220lm±10%  
 Beam angle: 360°  
 Color: WW, NW, CW  
 CRI: Ra>80  
 Voltage: 110-130VAC / 220-240VAC  
 Material: Silicone Glue  
 Base: E12  
 Remark: **Non-dimmable**



Model: SNS-E12-2835D-32LED  
 Dimension: Ø15X53mm  
 LED type: 32pcs SMD2835  
 Power: 2.5W±0.3W  
 Lumens: 200lm±10%  
 Beam angle: 360°  
 Color: WW, NW, CW  
 CRI: Ra>80  
 Voltage: 110-130VAC / 220-240VAC  
 Material: Silicone Glue  
 Base: E12  
 Remark: **Dimmable**



Model: SNS-E12-2835-64LED  
 Dimension: Ø15X63mm  
 LED type: 64pcs SMD2835  
 Power: 3.5W±0.3W  
 Lumens: 320lm±10%  
 Beam angle: 360°  
 Color: WW, NW, CW  
 CRI: Ra>80  
 Voltage: 110-130VAC / 220-240VAC  
 Material: Silicone Glue  
 Base: E12  
 Remark: **Non-dimmable**



Model: SNS-E12-2835D-64LED  
 Dimension: Ø15X63mm  
 LED type: 64pcs SMD2835  
 Power: 3.7W±0.3W  
 Lumens: 310lm±10%  
 Beam angle: 360°  
 Color: WW, NW, CW  
 CRI: Ra>80  
 Voltage: 110-130VAC / 220-240VAC  
 Material: Silicone Glue  
 Base: E12  
 Remark: **Dimmable**



## E14 LED Bulb Series



Model: SNS-E14-2835-88LED  
 Dimension: Ø19X67.7mm  
 LED type: 88pcs SMD2835  
 Power: 5.0W±0.3W  
 Lumens: 650lm±10%  
 Beam angle: 360°  
 Color: WW, NW, CW  
 CRI: Ra>80  
 Voltage: 110-130VAC / 220-240VAC  
 Material: Ceramic + PC  
 Base: E14  
 Remark: **Non-dimmable, No Flicker**



Model: SNS-E14-2835D-88LED  
 Dimension: Ø19X67.7mm  
 LED type: 88pcs SMD2835  
 Power: 5.0W±0.3W  
 Lumens: 650lm±10%  
 Beam angle: 360°  
 Color: WW, NW, CW  
 CRI: Ra>80  
 Voltage: 110-130VAC / 220-240VAC  
 Material: Ceramic + PC  
 Base: E14  
 Remark: **Dimmable**



Model: SNS-E14-4014-54LED  
 Dimension: Ø16.5X58.5mm  
 LED type: 54pcs SMD4014  
 Power: 3.3W±0.3W  
 Lumens: 450lm±10%  
 Beam angle: 360°  
 Color: WW, NW, CW  
 CRI: Ra>80  
 Voltage: 100-240VAC  
 Material: Ceramic + PC  
 Base: E14  
 Remark: **Non-dimmable, No Flicker**



Model: SNS-E14-2835-51LED  
 Dimension: Ø15.8X54mm  
 LED type: 51pcs SMD2835  
 Power: 3.3W±0.3W  
 Lumens: 330lm±10%  
 Beam angle: 360°  
 Color: WW, NW, CW  
 CRI: Ra>80  
 Voltage: 110-130VAC / 220-240VAC  
 Material: Ceramic + PC  
 Base: E14  
 Remark: **Non-dimmable**



Model: SNS-E14-4LED-2W  
 Dimension: Ø16X51mm  
 LED type: 4pcs COB  
 Power: 2.0W±0.3W  
 Lumens: 220lm±10%  
 Beam angle: 360°  
 Color: WW, NW, CW  
 CRI: Ra>80  
 Voltage: 110-130VAC / 220-240VAC  
 Material: Ceramic + PC  
 Base: E14  
 Remark: **Dimmable**



Model: SNS-E14-4LED-3W  
 Dimension: Ø16X66mm  
 LED type: 4pcs COB  
 Power: 3.0W±0.3W  
 Lumens: 380lm±10%  
 Beam angle: 360°  
 Color: WW, NW, CW  
 CRI: Ra>80  
 Voltage: 110-130VAC / 220-240VAC  
 Material: Ceramic + PC  
 Base: E14  
 Remark: **Dimmable**



Model: SNS-E14-2609-2.5WA  
 Dimension: Ø16X63mm  
 LED type: 1pc 2609 COB  
 Power: 2.4W±0.3W  
 Lumens: 250lm±10%  
 Beam angle: 360°  
 Color: WW, NW, CW  
 CRI: Ra>80  
 Voltage: 110-130VAC / 220-240VAC  
 Material: Ceramic + Silicone Glue + PC  
 Base: E14  
 Remark: **Dimmable**



Model: SNS-E14-2835-84LED  
 Dimension: Ø31X106.5mm  
 LED type: 84pcs SMD2835  
 Power: 7.0W±0.5W  
 Lumens: 900lm±10%  
 Beam angle: 360°  
 Color: WW, NW, CW  
 CRI: Ra>80  
 Voltage: 220-240VAC  
 Material: Ceramic + PC  
 Base: E14 / E27  
 Remark: **Non-dimmable, No Flicker**

## E14 LED Bulb Series



Model: SNS-E14-3014-57LED  
 Dimension: Ø15X54mm  
 LED type: 57pcs SMD4014  
 Power: 2.2W±0.3W  
 Lumens: 220lm±10%  
 Beam angle: 360°  
 Color: WW, NW, CW  
 CRI: Ra>80  
 Voltage: 10-20V / 10-24VAC&10-30VDC  
 Material: Silicone Glue  
 Base: E14  
 Remark: **Non-dimmable**



Model: SNS-E14-3014-81LED  
 Dimension: Ø15X63.5mm  
 LED type: 81pcs SMD4014  
 Power: 3.3W±0.3W  
 Lumens: 330lm±10%  
 Beam angle: 360°  
 Color: WW, NW, CW  
 CRI: Ra>80  
 Voltage: 10-20V / 10-24VAC&10-30VDC  
 Material: Silicone Glue  
 Base: E14  
 Remark: **Non-dimmable**



Model: SNS-E14-3014-64LED  
 Dimension: Ø15X53mm  
 LED type: 64pcs SMD4014  
 Power: 2.5W±0.3W  
 Lumens: 240lm±10%  
 Beam angle: 360°  
 Color: WW, NW, CW  
 CRI: Ra>80  
 Voltage: 110-130VAC / 220-240VAC  
 Material: Silicone Glue  
 Base: E14  
 Remark: **Non-dimmable**



Model: SNS-E14-3014D-64LED  
 Dimension: Ø15X53mm  
 LED type: 64pcs SMD4014  
 Power: 2.7W±0.3W  
 Lumens: 230lm±10%  
 Beam angle: 360°  
 Color: WW, NW, CW  
 CRI: Ra>80  
 Voltage: 110-130VAC / 220-240VAC  
 Material: Silicone Glue  
 Base: E14  
 Remark: **Dimmable**



Model: SNS-E14-3014-104LED  
 Dimension: Ø15X64mm  
 LED type: 104pcs SMD4014  
 Power: 3.5W±0.3W  
 Lumens: 340lm±10%  
 Beam angle: 360°  
 Color: WW, NW, CW  
 CRI: Ra>80  
 Voltage: 110-130VAC / 220-240VAC  
 Material: Silicone Glue  
 Base: E14  
 Remark: **Non-dimmable**



Model: SNS-E14-2835-28LED  
 Dimension: Ø18X52mm  
 LED type: 28pcs SMD2835  
 Power: 2.3W±0.3W  
 Lumens: 200lm±10%  
 Beam angle: 360°  
 Color: WW, NW, CW  
 CRI: Ra>80  
 Voltage: 110-130VAC / 220-240VAC  
 Material: Silicone Glue  
 Base: E14  
 Remark: **Non-dimmable**



Model: SNS-E14-2835-32LED  
 Dimension: Ø15X53mm  
 LED type: 32pcs SMD2835  
 Power: 2.3W±0.3W  
 Lumens: 220lm±10%  
 Beam angle: 360°  
 Color: WW, NW, CW  
 CRI: Ra>80  
 Voltage: 110-130VAC / 220-240VAC  
 Material: Silicone Glue  
 Base: E14  
 Remark: **Non-dimmable**



Model: SNS-E14-2835-64LED  
 Dimension: Ø15X64mm  
 LED type: 64pcs SMD2835  
 Power: 3.5W±0.3W  
 Lumens: 320lm±10%  
 Beam angle: 360°  
 Color: WW, NW, CW  
 CRI: Ra>80  
 Voltage: 110-130VAC / 220-240VAC  
 Material: Silicone Glue  
 Base: E14  
 Remark: **Non-dimmable**



## B15 LED Bulb Series



Model: SNS-B15-3014-57LED  
 Dimension: Ø15X52mm  
 LED type: 57pcs SMD3014  
 Power: 2.2W±0.3W  
 Lumens: 220lm±10%  
 Beam angle: 360°  
 Color: WW, NW, CW  
 CRI: Ra>80  
 Voltage: 10-24VAC&10-30VDC  
 Material: Silicone Glue  
 Base: BA15S, BA15D  
 Remark: **Non-dimmable**



Model: SNS-B15-3014-81LED  
 Dimension: Ø15X62mm  
 LED type: 81pcs SMD3014  
 Power: 3.0W±0.3W  
 Lumens: 300lm±10%  
 Beam angle: 360°  
 Color: WW, NW, CW  
 CRI: Ra>80  
 Voltage: 10-36VAC&10-50VDC  
 Material: Silicone Glue  
 Base: BA15S, BA15D, BAY15D  
 Remark: **Non-dimmable**



Model: SNS-B15-3014-64LED  
 Dimension: Ø15X51mm  
 LED type: 64pcs SMD3014  
 Power: 2.5W±0.3W  
 Lumens: 240lm±10%  
 Beam angle: 360°  
 Color: WW, NW, CW  
 CRI: Ra>80  
 Voltage: 110-130VAC / 220-240VAC  
 Material: Silicone Glue  
 Base: BA15D  
 Remark: **Non-dimmable**



Model: SNS-B15-3014D-64LED  
 Dimension: Ø15X51mm  
 LED type: 64pcs SMD3014  
 Power: 2.7W±0.3W  
 Lumens: 230lm±10%  
 Beam angle: 360°  
 Color: WW, NW, CW  
 CRI: Ra>80  
 Voltage: 110-130VAC / 220-240VAC  
 Material: Silicone Glue  
 Base: BA15D  
 Remark: **Dimmable**



Model: SNS-B15-3014-72LED  
 Dimension: Ø15X64.5mm  
 LED type: 72pcs SMD3014  
 Power: 3.1W±0.3W  
 Lumens: 250lm±10%  
 Beam angle: 360°  
 Color: WW, NW, CW  
 CRI: Ra>80  
 Voltage: 110-130VAC / 220-240VAC  
 Material: Silicone Glue  
 Base: BA15D  
 Remark: **Dimmable**



Model: SNS-B15-3014-104LED  
 Dimension: Ø15X63mm  
 LED type: 104pcs SMD3014  
 Power: 3.7W±0.3W  
 Lumens: 360lm±10%  
 Beam angle: 360°  
 Color: WW, NW, CW  
 CRI: Ra>80  
 Voltage: 110-130VAC / 220-240VAC  
 Material: Silicone Glue  
 Base: BA15D  
 Remark: **Non-dimmable**



Model: SNS-B15-2835-32LED  
 Dimension: Ø15X51mm  
 LED type: 32pcs SMD2835  
 Power: 2.3W±0.3W  
 Lumens: 220lm±10%  
 Beam angle: 360°  
 Color: WW, NW, CW  
 CRI: Ra>80  
 Voltage: 110-130VAC / 220-240VAC  
 Material: Silicone Glue  
 Base: BA15D  
 Remark: **Non-dimmable**



Model: SNS-B15-2835D-32LED  
 Dimension: Ø15X51mm  
 LED type: 32pcs SMD2835  
 Power: 2.5W±0.3W  
 Lumens: 200lm±10%  
 Beam angle: 360°  
 Color: WW, NW, CW  
 CRI: Ra>80  
 Voltage: 110-130VAC / 220-240VAC  
 Material: Silicone Glue  
 Base: BA15D  
 Remark: **Dimmable**

## B15 LED Bulb Series



Model: SNS-B15-2835-40LED  
 Dimension: Ø15X52mm  
 LED type: 40pcs SMD2835  
 Power: 3.0W±0.3W  
 Lumens: 260lm±10%  
 Beam angle: 360°  
 Color: WW, NW, CW  
 CRI: Ra>80  
 Voltage: 220-240VAC  
 Material: Silicone Glue  
 Base: BA15D  
 Remark: **Non-dimmable**



Model: SNS-B15-2835-64LED  
 Dimension: Ø15X63mm  
 LED type: 64pcs SMD2835  
 Power: 3.5W±0.3W  
 Lumens: 320lm±10%  
 Beam angle: 360°  
 Color: WW, NW, CW  
 CRI: Ra>80  
 Voltage: 110-130VAC / 220-240VAC  
 Material: Silicone Glue  
 Base: BA15D  
 Remark: **Non-dimmable**



Model: SNS-B15-2835D-64LED  
 Dimension: Ø15X63mm  
 LED type: 64pcs SMD2835  
 Power: 3.7W±0.3W  
 Lumens: 310lm±10%  
 Beam angle: 360°  
 Color: WW, NW, CW  
 CRI: Ra>80  
 Voltage: 110-130VAC / 220-240VAC  
 Material: Silicone Glue  
 Base: BA15D  
 Remark: **Dimmable**



Model: SNS-B15-4014-63LED  
 Dimension: Ø16.5X56.3mm  
 LED type: 63pcs SMD4014  
 Power: 3.2W±0.3W  
 Lumens: 450lm±10%  
 Beam angle: 360°  
 Color: WW, NW, CW  
 CRI: Ra>80  
 Voltage: 10-24VAC&10-30VDC  
 Material: Ceramic + PC  
 Base: BA15S  
 Remark: **Non-dimmable**



Model: SNS-B15Q-51SMD  
 Dimension: Ø15.8X53.5mm  
 LED type: 51pcs SMD2835  
 Power: 3.3W±0.3W  
 Lumens: 330lm±10%  
 Beam angle: 360°  
 Color: WW, NW, CW  
 CRI: Ra>80  
 Voltage: 110-130VAC / 220-240VAC  
 Material: Ceramic + PC  
 Base: BA15D  
 Remark: **Non-dimmable**



Model: SNS-B15-4014-54LED  
 Dimension: Ø17X56mm  
 LED type: 54pcs SMD4014  
 Power: 3.3W±0.3W  
 Lumens: 450lm±10%  
 Beam angle: 360°  
 Color: WW, NW, CW  
 CRI: Ra>80  
 Voltage: 100-240VAC  
 Material: Ceramic + PC  
 Base: BA15D  
 Remark: **Non-dimmable**



Model: SNS-B15-2835-88LED  
 Dimension: Ø19X66.5mm  
 LED type: 88pcs SMD2835  
 Power: 5.0W±0.3W  
 Lumens: 650lm±10%  
 Beam angle: 360°  
 Color: WW, NW, CW  
 CRI: Ra>80  
 Voltage: 110-130VAC / 220-240VAC  
 Material: Ceramic + PC  
 Base: BA15D  
 Remark: **Non-dimmable, No Flicker**



Model: SNS-B15-2835D-88LED  
 Dimension: Ø19X66.5mm  
 LED type: 88pcs SMD2835  
 Power: 5.0W±0.3W  
 Lumens: 650lm±10%  
 Beam angle: 360°  
 Color: WW, NW, CW  
 CRI: Ra>80  
 Voltage: 110-130VAC / 220-240VAC  
 Material: Ceramic + PC  
 Base: BA15D  
 Remark: **Dimmable**



## R7S LED Light Series



Model: SNS-R7S-78mm-2835-60LED  
 Dimension: Ø20X78mm  
 LED type: 60pcs SMD2835  
 Power: 5.0W±0.5W  
 Lumens: 600lm±10%  
 Beam angle: 360°  
 Color: WW, NW, CW  
 CRI: Ra>80  
 Voltage: 100-240VAC  
 Material: Ceramic + PC  
 Base: R7S  
 Remark: **Non-dimmable**



Model: SNS-R7S-118mm-2835-120LED  
 Dimension: Ø20X118mm  
 LED type: 120pcs SMD2835  
 Power: 10W±0.5W  
 Lumens: 1050lm±10%  
 Beam angle: 360°  
 Color: WW, NW, CW  
 CRI: Ra>80  
 Voltage: 100-240VAC  
 Material: Ceramic + PC  
 Base: R7S  
 Remark: **Non-dimmable**



Model: SNS-R7S-78mm-2835D-60LED  
 Dimension: Ø20X78mm  
 LED type: 60pcs SMD2835  
 Power: 4.5W±0.5W  
 Lumens: 360lm±10%  
 Beam angle: 360°  
 Color: WW, NW, CW  
 CRI: Ra>80  
 Voltage: 220-240VAC  
 Material: Ceramic + PC  
 Base: R7S  
 Remark: **0-100% Dimmable, No Flicker**



Model: SNS-R7S-118mm-5730D-96LED  
 Dimension: Ø20X118mm  
 LED type: 96pcs SMD5730  
 Power: 8.0W±0.5W  
 Lumens: 800lm±10%  
 Beam angle: 360°  
 Color: WW, NW, CW  
 CRI: Ra>80  
 Voltage: 220-240VAC  
 Material: Ceramic + PC  
 Base: R7S  
 Remark: **0-100% Dimmable, No Flicker**



Model: SNS-R7S-78mm-2835T-60LED  
 Dimension: Ø15X78mm  
 LED type: 60pcs SMD2835  
 Power: 5.0W±0.5W  
 Lumens: 500lm±10%  
 Beam angle: 360°  
 Color: WW, NW, CW  
 CRI: Ra>80  
 Voltage: 110-130VAC/220-240VAC  
 Material: Ceramic + PC  
 Base: R7S  
 Remark: **Dimmable**



Model: SNS-R7S-118mm-2835T-80LED  
 Dimension: Ø15X118mm  
 LED type: 80pcs SMD2835  
 Power: 10.0W±0.5W  
 Lumens: 1000lm±10%  
 Beam angle: 360°  
 Color: WW, NW, CW  
 CRI: Ra>80  
 Voltage: 110-130VAC/220-240VAC  
 Material: Ceramic + PC  
 Base: R7S  
 Remark: **Dimmable**



Model: SNS-R7S-78mm-2835F-75LED  
 Dimension: Ø28X78mm  
 LED type: 75pcs SMD2835  
 Power: 10.0W±0.5W  
 Lumens: 1000lm±10%  
 Beam angle: 360°  
 Color: WW, NW, CW  
 CRI: Ra>80  
 Voltage: 100-240VAC  
 Material: Ceramic + PC  
 Base: R7S  
 Remark: **Non-dimmable**



Model: SNS-R7S-118mm-2835F-120LED  
 Dimension: Ø28X118mm  
 LED type: 120pcs SMD2835  
 Power: 15.0W±0.5W  
 Lumens: 1500lm±10%  
 Beam angle: 360°  
 Color: WW, NW, CW  
 CRI: Ra>80  
 Voltage: 100-240VAC  
 Material: Ceramic + PC  
 Base: R7S  
 Remark: **Non-dimmable**

## R7S / E11 / E17 LED Light Series



Model: SNS-R7S-118mm-2835W-96LED  
 Dimension: Ø20X118mm  
 LED type: 96pcs SMD2835  
 Power: 8.0W±0.5W  
 Lumens: 900lm±10%  
 Beam angle: 360°  
 Color: WW, NW, CW  
 CRI: Ra>80  
 Voltage: 220-240VAC  
 Material: Ceramic + PC  
 Base: R7S  
 Remark: **Non-dimmable, No Flicker**



Model: SNS-R7S-118mm-2835W-108LED  
 Dimension: Ø22X118mm  
 LED type: 108pcs SMD2835  
 Power: 8.0W±0.5W  
 Lumens: 900lm±10%  
 Beam angle: 360°  
 Color: WW, NW, CW  
 CRI: Ra>80  
 Voltage: 220-240VAC  
 Material: Ceramic + PC  
 Base: R7S  
 Remark: **Dimmable, No Flicker**



Model: SNS-R7S-118mm-2835D-150LED  
 Dimension: 46X118mm  
 LED type: 150pcs SMD2835  
 Power: 15W±0.5W  
 Lumens: 1600lm±10%  
 Beam angle: 180°  
 Color: WW, NW, CW  
 CRI: Ra>80  
 Voltage: 100-240VAC  
 Material: Ceramic + PC  
 Base: R7S  
 Remark: **Dimmable**



Model: SNS-E11-2835-51LED  
 Dimension: Ø16X49mm  
 LED type: 51pcs SMD2835  
 Power: 3.3W±0.3W  
 Lumens: 330lm±10%  
 Beam angle: 360°  
 Color: WW, NW, CW  
 CRI: Ra>80  
 Voltage: 110-130VAC  
 Material: Ceramic + PC  
 Base: E11  
 Remark: **Non-dimmable**



Model: SNS-E17-3014-64LED  
 Dimension: Ø18X49mm  
 LED type: 64pcs SMD3014  
 Power: 2.7W±0.3W  
 Lumens: 230lm±10%  
 Beam angle: 360°  
 Color: WW, NW, CW  
 CRI: Ra>80  
 Voltage: 110-130VAC  
 Material: Silicone Glue  
 Base: E17  
 Remark: **Dimmable**



Model: SNS-E17-4014-54LED  
 Dimension: Ø18.5X56.5mm  
 LED type: 54pcs SMD4014  
 Power: 3.2W±0.3W  
 Lumens: 400lm±10%  
 Beam angle: 360°  
 Color: WW, NW, CW  
 CRI: Ra>80  
 Voltage: 100-240VAC  
 Material: Ceramic + PC  
 Base: E17  
 Remark: **Non-dimmable, No Flicker**



Model: SNS-E17-2835-88LED  
 Dimension: Ø19X67.7mm  
 LED type: 88pcs SMD2835  
 Power: 5.0W±0.3W  
 Lumens: 650lm±10%  
 Beam angle: 360°  
 Color: WW, NW, CW  
 CRI: Ra>80  
 Voltage: 110-130VAC  
 Material: Ceramic + PC  
 Base: E17  
 Remark: **Non-dimmable, No Flicker**



Model: SNS-E17-2835D-88LED  
 Dimension: Ø19X67.7mm  
 LED type: 88pcs SMD2835  
 Power: 5.0W±0.3W  
 Lumens: 650lm±10%  
 Beam angle: 360°  
 Color: WW, NW, CW  
 CRI: Ra>80  
 Voltage: 110-130VAC  
 Material: Ceramic + PC  
 Base: E17  
 Remark: **Dimmable**



## G8 / G8.5 / G12 LED Light Series



Model: SNS-G8-3014D-48LED  
 Dimension: Ø13X41mm  
 LED type: 48pcs SMD3014  
 Power: 1.5W±0.3W  
 Lumens: 120lm±10%  
 Beam angle: 360°  
 Color: WW, NW, CW  
 CRI: Ra>80  
 Voltage: 110-130VAC  
 Material: Silicone Glue  
 Base: G8  
 Remark: **Dimmable**



Model: SNS-G8-3014D-64LED  
 Dimension: Ø15X41.8mm  
 LED type: 64pcs SMD3014  
 Power: 2.5W±0.3W  
 Lumens: 220lm±10%  
 Beam angle: 360°  
 Color: WW, NW, CW  
 CRI: Ra>80  
 Voltage: 110-130VAC  
 Material: Silicone Glue  
 Base: G8  
 Remark: **Dimmable**



Model: SNS-G8.5-10W  
 Dimension: Ø25X100mm  
 LED type: 108pcs SMD2835  
 Power: 10.0W±0.5W  
 Lumens: 1000lm±10%  
 Beam angle: 360°  
 Color: WW, NW, CW  
 CRI: Ra>80  
 Voltage: 100-240VAC  
 Material: Plastic + Aluminum  
 Base: G8.5  
 Remark: **Non-dimmable**



Model: SNS-G8.5-15W  
 Dimension: Ø25X126mm  
 LED type: 144pcs SMD2835  
 Power: 15.0W±0.5W  
 Lumens: 1500lm±10%  
 Beam angle: 360°  
 Color: WW, NW, CW  
 CRI: Ra>80  
 Voltage: 100-240VAC  
 Material: Plastic + Aluminum  
 Base: G8.5  
 Remark: **Non-dimmable**



Model: SNS-G12-10W  
 Dimension: Ø30X100mm  
 LED type: 108pcs SMD2835  
 Power: 10.0W±0.5W  
 Lumens: 1000lm±10%  
 Beam angle: 360°  
 Color: WW, NW, CW  
 CRI: Ra>80  
 Voltage: 100-240VAC  
 Material: Plastic + Aluminum  
 Base: G12  
 Remark: **Non-dimmable**



Model: SNS-G12-15W  
 Dimension: Ø30X127mm  
 LED type: 144pcs SMD2835  
 Power: 15.0W±0.5W  
 Lumens: 1500lm±10%  
 Beam angle: 360°  
 Color: WW, NW, CW  
 CRI: Ra>80  
 Voltage: 100-240VAC  
 Material: Plastic + Aluminum  
 Base: G12  
 Remark: **Non-dimmable**



Model: SNS-G12-35W  
 Dimension: Ø95X126mm  
 LED type: COB  
 Power: 35W±0.5W  
 Lumens: 3200lm±10%  
 Beam angle: 15°, 24°, 36°  
 Color: WW, NW, CW  
 CRI: Ra>80  
 Voltage: 100-240VAC  
 Material: Aluminum  
 Base: G12  
 Remark: **Non-dimmable**



Model: SNS-G12-40W  
 Dimension: Ø95X126mm  
 LED type: COB  
 Power: 40W±0.5W  
 Lumens: 3600lm±10%  
 Beam angle: 15°, 24°, 36°  
 Color: WW, NW, CW  
 CRI: Ra>80  
 Voltage: 100-240VAC  
 Material: Aluminum  
 Base: G12  
 Remark: **Non-dimmable**

## PL LED Light Series



Model: SNS-PLH-6W  
 Dimension: Ø34.3X135mm  
 LED type: 2835SMD  
 Power: 6.0W±0.3W  
 Lumens: 600lm±10%  
 Beam angle: 120°  
 Color temperature: 2700K, 3000K, 4000K, 5000K, 6000K  
 CRI: Ra>80  
 Voltage: 100-277VAC  
 Rotating: 270° rotating base  
 Cover: Frosted or Clear  
 Material: Aluminum+PC  
 Base: G24D/G24Q/G23/GX23/GU24/E26/E27  
 Warranty: 5 years  
 Remark: **Non-dimmable, Equivalence 13W CFL**



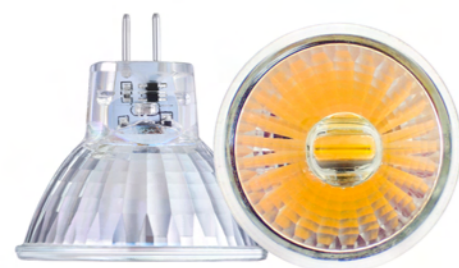
Model: SNS-PLH-8W  
 Dimension: Ø34.3X154mm  
 LED type: 2835SMD  
 Power: 8.0W±0.3W  
 Lumens: 800lm±10%  
 Beam angle: 120°  
 Color temperature: 2700K, 3000K, 4000K, 5000K, 6000K  
 CRI: Ra>80  
 Voltage: 100-277VAC  
 Rotating: 270° rotating base  
 Cover: Frosted or Clear  
 Material: Aluminum+PC  
 Base: G24D/G24Q/G23/GX23/GU24/E26/E27  
 Warranty: 5 years  
 Remark: **Non-dimmable, Equivalence 18W CFL**



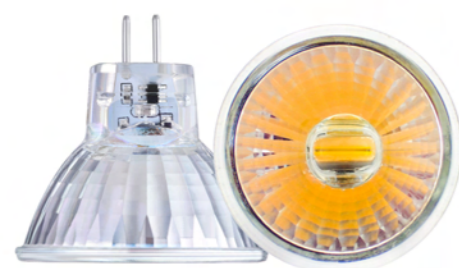
Model: SNS-PLH-11W  
 Dimension: Ø34.3X181mm  
 LED type: 2835SMD  
 Power: 11.0W±0.3W  
 Lumens: 1100lm±10%  
 Beam angle: 120°  
 Color temperature: 2700K, 3000K, 4000K, 5000K, 6000K  
 CRI: Ra>80  
 Voltage: 100-277VAC  
 Rotating: 270° rotating base  
 Cover: Frosted or Clear  
 Material: Aluminum+PC  
 Base: G24D/G24Q/G23/GX23/GU24/E26/E27  
 Warranty: 5 years  
 Remark: **Non-dimmable, Equivalence 26W CFL**



## MR16 / GU10 LED Spotlight Series



Model: SNS-MR11-2WC  
Dimension: Ø35X35mm  
LED type: 1pc 0708 COB  
Power: 2.0W±0.3W  
Lumens: 220lm±10%  
Beam angle: 60°  
Color temperature: 2700K, 3000K, 4000K  
CRI: Ra>80  
Voltage: 10-16VAC/DC  
Material: Glass  
Base: MR11  
Remark: **Dimmable**



Model: SNS-MR11-2WD  
Dimension: Ø35X35mm  
LED type: 1pc 0708 COB  
Power: 2.0W±0.3W  
Lumens: 220lm±10%  
Beam angle: 60°  
Color temperature: 2700K, 3000K, 4000K  
CRI: Ra>80  
Voltage: 12-24VAC/DC  
Material: Glass  
Base: MR11  
Remark: **Non-dimmable**



Model: SNS-MR11-HA3WP2  
Dimension: Ø35X39.5mm  
LED type: 1pc 1313COB  
Power: 3.0W±0.3W  
Lumens: 300lm±10%  
Beam angle: 60°  
Color temperature: 2700K, 3000K, 4000K  
CRI: Ra>80  
Voltage: 12VAC/DC  
Material: Plastic and Aluminum  
Base: MR11  
Remark: **Non-dimmable**



Model: SNS-MR11-4x1W  
Dimension: Ø35X38mm  
LED type: 4pcs 1W LED  
Power: 3.0W±0.3W  
Lumens: 220lm±10%  
Beam angle: 30°  
Color: WW, NW, CW  
CRI: Ra>80  
Voltage: 12VAC/DC  
Material: Aluminum  
Base: MR11  
Remark: **Non-dimmable**

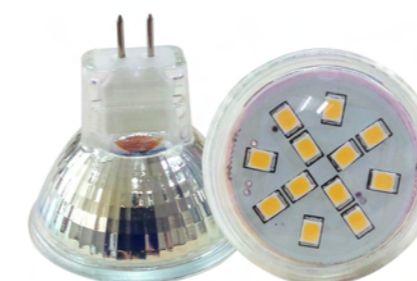
## MR11 LED Spotlight Series



Model: SNS-MR11-2WCOB  
Dimension: Ø35X38mm  
LED type: 1pc COB  
Power: 2.5W±0.3W  
Lumens: 200lm±10%  
Beam angle: 45°  
Color temperature: 3000K, 6000K  
CRI: Ra>80  
Voltage: 12VAC/DC  
Material: Aluminum  
Base: MR11, BA15S, BA15D, BAY15D  
Remark: **Non-dimmable**



Model: SNS-MR11-1x2W  
Dimension: Ø35X38mm  
LED type: 1pc 2W LED  
Power: 2.0W±0.3W  
Lumens: 120lm±10%  
Beam angle: 45°  
Color temperature: 2700K, 6000K  
CRI: Ra>80  
Voltage: 12VAC/DC  
Material: Aluminum  
Base: MR11, BA15S, BA15D, BAY15D  
Remark: **Non-dimmable**



Model: SNS-MR11-12LED  
Dimension: Ø35X37mm  
LED type: 12pcs 2835SMD  
Power: 2.0W±0.3W  
Lumens: 150lm±10%  
Beam angle: 120°  
Color temperature: 3000K, 4000K, 6000K  
CRI: Ra>80  
Voltage: 10-30VDC  
Material: Glass  
Base: MR11  
Remark: **Non-dimmable, With cover**



Model: SNS-MR11-15LED  
Dimension: Ø35X37mm  
LED type: 15pcs 2835SMD  
Power: 3.0W±0.3W  
Lumens: 240lm±10%  
Beam angle: 120°  
Color temperature: 3000K, 4000K, 6000K  
CRI: Ra>80  
Voltage: 10-30VDC  
Material: Glass  
Base: MR11  
Remark: **Non-dimmable, Without Cover**



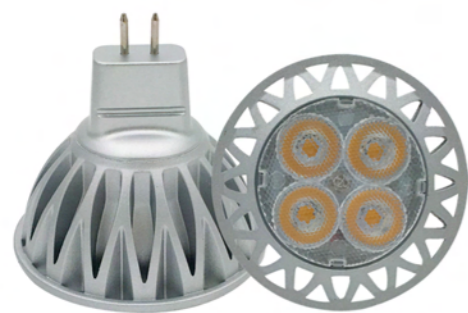
## MR16 LED Spotlight Series



Model: SNS-MR16-MS5WA6  
 Dimension: Ø50X46mm  
 LED type: COB  
 Power: 5.0W±0.3W  
 Lumens: 500lm±10%  
 Beam angle: 18°, 38°, 60°  
 Color: 2700K, 3000K, 4000K, 5000K  
 CRI: Ra>80  
 Voltage: 12VAC/DC, 12-24VAC/DC  
 Material: Aluminum  
 Base: MR16  
 Remark: **Dimmable**, IP68, White housing is available



Model: SNS-MR16-HA5WD1  
 Dimension: Ø50X46mm  
 LED type: COB  
 Power: 5.0W±0.3W  
 Lumens: 500lm±10%  
 Beam angle: 38°  
 Color: 2700K, 3000K  
 CRI: Ra>80  
 Voltage: 12VAC/DC  
 Material: Glass  
 Base: MR16  
 Remark: **Dimmable**



Model: SNS-MR16-MS5WA  
 Dimension: Ø50X49mm  
 LED type: 4pcs 1W LED  
 Power: 5.0W±0.3W  
 Lumens: 350lm±10%  
 Beam angle: 38°, 60°  
 Color: WW, NW, CW  
 CRI: Ra>80  
 Voltage: 12VAC/DC  
 Material: Aluminum  
 Base: MR16  
 Remark: **Non-dimmable**



Model: SNS-MR16-MS7WA  
 Dimension: Ø50X49mm  
 LED type: 6pcs 1W LED  
 Power: 7.0W±0.3W  
 Lumens: 450lm±10%  
 Beam angle: 38°, 60°  
 Color: WW, NW, CW  
 CRI: Ra>80  
 Voltage: 12VAC/DC  
 Material: Aluminum  
 Base: MR16  
 Remark: **Non-dimmable**

## MR16 LED Spotlight Series



Model: SNS-MR16-HA3WP2  
 Dimension: Ø50X50mm  
 LED type: COB  
 Power: 3.0W±0.3W  
 Lumens: 350lm±10%  
 Beam angle: 38°  
 Color: WW, NW, CW  
 CRI: Ra>80  
 Voltage: 12VAC/DC  
 Material: Plastic + Aluminum  
 Base: MR16  
 Remark: **Non-dimmable**



Model: SNS-MR16-HA4WP2  
 Dimension: Ø50X50mm  
 LED type: COB  
 Power: 4.0W±0.3W  
 Lumens: 450lm±10%  
 Beam angle: 38°  
 Color: WW, NW, CW  
 CRI: Ra>80  
 Voltage: 12VAC/DC  
 Material: Plastic + Aluminum  
 Base: MR16  
 Remark: **Non-dimmable**



Model: SNS-MR16-HA5WP2  
 Dimension: Ø50X50mm  
 LED type: COB  
 Power: 5.0W±0.3W  
 Lumens: 550lm±10%  
 Beam angle: 38°  
 Color: WW, NW, CW  
 CRI: Ra>80  
 Voltage: 12VAC/DC  
 Material: Plastic + Aluminum  
 Base: MR16  
 Remark: **Non-dimmable**



Model: SNS-MR16-5WP2  
 Dimension: Ø50X50mm  
 LED type: 2835SMD  
 Power: 5.0W±0.3W  
 Lumens: 400lm±10%  
 Beam angle: 120°  
 Color: WW, NW, CW  
 CRI: Ra>80  
 Voltage: 10-30VDC  
 Material: Plastic + Aluminum + PC Cover  
 Base: MR16  
 Remark: **Non-dimmable**



## GU10 LED Spotlight Series



Model: SNS-GU10-MS5WA  
 Dimension: Ø50X56mm  
 LED type: 4pcs 1W LED  
 Power: 5.0W±0.3W  
 Lumens: 350lm±10%  
 Beam angle: 38°, 60°  
 Color: WW, NW, CW  
 CRI: Ra>80  
 Voltage: 110-240VAC  
 Material: Aluminum  
 Base: GU10  
 Remark: **Non-dimmable**



Model: SNS-GU10D-MS5WA  
 Dimension: Ø50X56mm  
 LED type: 4pcs 1W LED  
 Power: 5.0W±0.3W  
 Lumens: 320lm±10%  
 Beam angle: 38°, 60°  
 Color: WW, NW, CW  
 CRI: Ra>80  
 Voltage: 220-240VAC  
 Material: Aluminum  
 Base: GU10  
 Remark: **Dimmable**



Model: SNS-GU10-MS7WA  
 Dimension: Ø50X56mm  
 LED type: 6pcs 1W LED  
 Power: 7.0W±0.3W  
 Lumens: 450lm±10%  
 Beam angle: 38°, 60°  
 Color: WW, NW, CW  
 CRI: Ra>80  
 Voltage: 110-240VAC  
 Material: Aluminum  
 Base: GU10  
 Remark: **Non-dimmable**



Model: SNS-GU10D-MS7WA  
 Dimension: Ø50X56mm  
 LED type: 6pcs 1W LED  
 Power: 7.0W±0.3W  
 Lumens: 420lm±10%  
 Beam angle: 38°, 60°  
 Color: WW, NW, CW  
 CRI: Ra>80  
 Voltage: 220-240VAC  
 Material: Aluminum  
 Base: GU10  
 Remark: **Dimmable**

## GU10 LED Spotlight Series



Model: SNS-GU10-HA5WP2  
 Dimension: Ø50X55mm  
 LED type: COB  
 Power: 5.0W±0.3W  
 Lumens: 500lm±10%  
 Beam angle: 38°  
 Color: WW, NW, CW  
 CRI: Ra>80  
 Voltage: 100-265VAC  
 Material: Plastic + Aluminum  
 Base: GU10  
 Remark: **Non-dimmable**



Model: SNS-GU10-HA5WDP2  
 Dimension: Ø50X55mm  
 LED type: COB  
 Power: 5.5W±0.3W  
 Lumens: 450lm±10%  
 Beam angle: 38°  
 Color: WW, NW, CW  
 CRI: Ra>80  
 Voltage: 110-130VAC, 220-240VAC  
 Material: Plastic + Aluminum  
 Base: GU10  
 Remark: **Dimmable**



Model: SNS-GU10-MS5WP2  
 Dimension: Ø50X55mm  
 LED type: 5pcs 2835SMD  
 Power: 5.0W±0.3W  
 Lumens: 450lm±10%  
 Beam angle: 38°  
 Color: WW, 2700K  
 CRI: Ra>80  
 Voltage: 220-240VAC  
 Material: Plastic + Aluminum  
 Base: GU10  
 Remark: **Non-dimmable**



Model: SNS-GU10-MS6WP2  
 Dimension: Ø50X55mm  
 LED type: 8pcs 2835SMD  
 Power: 6.5W±0.3W  
 Lumens: 600lm±10%  
 Beam angle: 100°  
 Color: WW, 2700K  
 CRI: Ra>80  
 Voltage: 220-240VAC  
 Material: Plastic + Aluminum  
 Base: GU10  
 Remark: **Non-dimmable**



## GU10 LED Spotlight Series



Model: SNS-GU10-MS8WP2  
 Dimension: Ø50X55mm  
 LED type: 20pcs 2835SMD  
 Power: 8.0W±0.3W  
 Lumens: 900lm±10%  
 Beam angle: 100°  
 Color: WW, 2700K  
 CRI: Ra>80  
 Voltage: 220-240VAC  
 Material: Plastic + Aluminum  
 Base: GU10  
 Remark: **Non-dimmable**



Model: SNS-GU10-HA5WT  
 Dimension: Ø50X55mm  
 LED type: COB  
 Power: 5.0W±0.3W  
 Lumens: 500lm±10%  
 Beam angle: 38°  
 Color: WW, NW, CW  
 CRI: Ra>80  
 Voltage: 100-265VAC  
 Material: Glass  
 Base: GU10  
 Remark: **Non-dimmable**



Model: SNS-GU10-2835-32LED  
 Dimension: Ø50X55mm  
 LED type: 32pcs 2835SMD  
 Power: 3.2W±0.3W  
 Lumens: 380lm±10%  
 Beam angle: 120°  
 Color: WW, NW, CW  
 CRI: Ra>80  
 Voltage: 220-240VAC  
 Material: Glass  
 Base: GU10  
 Remark: **Non-dimmable, No Flicker**



Model: SNS-GU10-2835-52LED  
 Dimension: Ø50X55mm  
 LED type: 52pcs 2835SMD  
 Power: 3.2W±0.3W  
 Lumens: 380lm±10%  
 Beam angle: 120°  
 Color: WW, NW, CW  
 CRI: Ra>80  
 Voltage: 100-265VAC  
 Material: Glass  
 Base: GU10  
 Remark: **Non-dimmable**

## GU10 LED Spotlight Series

**Dim to WARM**



Model: SNS-GU10D-7W  
 Dimension: Ø50X55mm  
 LED type: Two color COB  
 Power: 7.0W±0.5W  
 Lumens: 400lm±10%  
 Beam angle: 38°  
 Color: 1800K to 2700K  
 CRI: Ra>90  
 Voltage: 220-240VAC  
 Material: Plastic + Aluminum  
 Base: GU10  
 Remark: **Dimmable 1800K to 2700K**

**Dim to WARM**



Model: SNS-GU10A-7W  
 Dimension: Ø50X55mm  
 LED type: Two color COB  
 Power: 7.0W±0.5W  
 Lumens: 400lm±10%  
 Beam angle: 15°, 38°, 60°  
 Color: 1800K to 2700K  
 CRI: Ra>90  
 Voltage: 220-240VAC  
 Material: Aluminum  
 Housing color: White, Black  
 Base: GU10  
 Remark: **Dimmable 1800K to 2700K**

